

Product Name: NCKX4 Rabbit Polyclonal Antibody
Catalog #: APRab14451



Summary

Production Name	NCKX4 Rabbit Polyclonal Antibody
Description	Rabbit Polyclonal Antibody
Host	Rabbit
Application	WB,ELISA
Reactivity	Human,Mouse,Rat

Performance

Conjugation	Unconjugated
Modification	Unmodified
Isotype	IgG
Clonality	Polyclonal
Form	Liquid
Storage	Store at 4°C short term. Aliquot and store at -20°C long term. Avoid freeze/thaw cycles.
Buffer	Liquid in PBS containing 50% glycerol, 0.5% BSA and 0.02% New type preservative N.
Purification	Affinity purification

Immunogen

Gene Name	SLC24A4
Alternative Names	SLC24A4; NCKX4; Sodium/potassium/calcium exchanger 4; Na(+)/K(+)/Ca(2+)-exchange protein 4; Solute carrier family 24 member 4
Gene ID	123041.0
SwissProt ID	Q8NFF2.The antiserum was produced against synthesized peptide derived from human SLC24A4. AA range:328-377

Application

Dilution Ratio	WB 1:500 - 1:2000. ELISA: 1:40000. Not yet tested in other applications.
Molecular Weight	60kD

Product Name: NCKX4 Rabbit Polyclonal Antibody
Catalog #: APRab14451

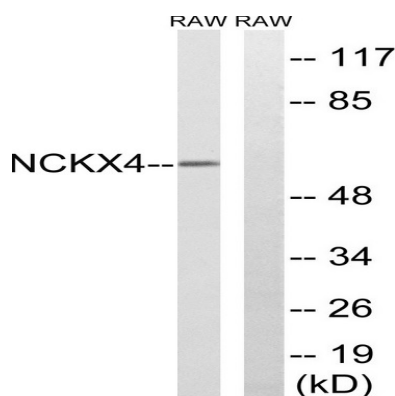


Background

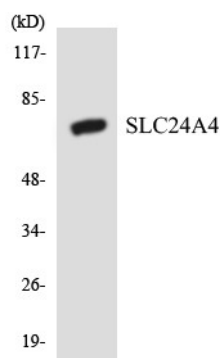
This gene encodes a member of the potassium-dependent sodium/calcium exchanger protein family. Alternative splicing results in multiple transcript variants.[provided by RefSeq, Jul 2010],caution:The sequence shown here is derived from an Ensembl automatic analysis pipeline and should be considered as preliminary data.,function:Transports 1 Ca(2+) and 1 K(+) in exchange for 4 Na(+),polymorphism:Genetic variations in SLC24A4 are associated with skin/hair/eye pigmentation type 6 (SHEP6) [MIM:210750]. Hair, eye and skin pigmentation are among the most visible examples of human phenotypic variation, with a broad normal range that is subject to substantial geographic stratification. In the case of skin, individuals tend to have lighter pigmentation with increasing distance from the equator. By contrast, the majority of variation in human eye and hair color is found among individuals of European ancestry, with most other human populations fixed for brown eyes and black hair.,similarity:Belongs to the sodium/potassium/calcium exchanger family. SLC24A subfamily.,tissue specificity:Expressed abundantly in all regions of the brain, aorta, lung and thymus. Expressed at lower levels in the stomach and intestine.,

Research Area

Image Data



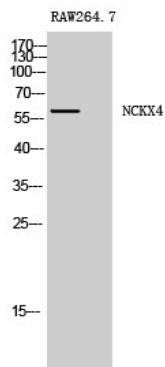
Western blot analysis of lysates from RAW264.7 cells, using SLC24A4 Antibody. The lane on the right is blocked with the synthesized peptide.



Product Name: NCKX4 Rabbit Polyclonal Antibody
Catalog #: APRab14451



Western blot analysis of the lysates from HeLa cells using SLC24A4 antibody.



Western Blot analysis of RAW264.7 cells using NCKX4 Polyclonal Antibody

Note

For research use only.