

Product Name: NCKX1 Rabbit Polyclonal Antibody
Catalog #: APRab14448



Summary

Production Name	NCKX1 Rabbit Polyclonal Antibody
Description	Rabbit Polyclonal Antibody
Host	Rabbit
Application	WB,ELISA
Reactivity	Human,Rat,Mouse

Performance

Conjugation	Unconjugated
Modification	Unmodified
Isotype	IgG
Clonality	Polyclonal
Form	Liquid
Storage	Store at 4°C short term. Aliquot and store at -20°C long term. Avoid freeze/thaw cycles.
Buffer	Liquid in PBS containing 50% glycerol, 0.5% BSA and 0.02% New type preservative N.
Purification	Affinity purification

Immunogen

Gene Name	SLC24A1
Alternative Names	SLC24A1; KIAA0702; NCKX1; Sodium/potassium/calcium exchanger 1; Na(+)/K(+)/Ca(2+)-exchange protein 1; Retinal rod Na-Ca+K exchanger
Gene ID	9187.0
SwissProt ID	O60721.The antiserum was produced against synthesized peptide derived from human SLC24A1. AA range:154-203

Application

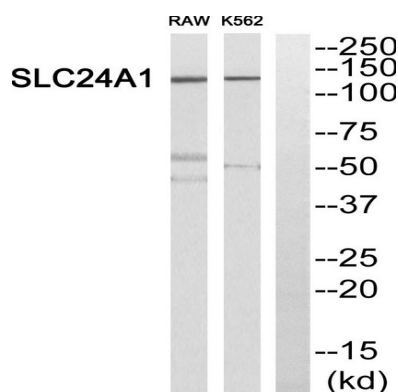
Dilution Ratio	WB 1:500 - 1:2000. ELISA: 1:10000
Molecular Weight	125kD

Background

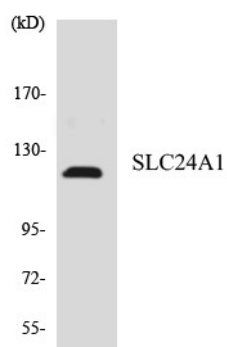
This gene encodes a member of the potassium-dependent sodium/calcium exchanger protein family. The encoded protein plays an important role in sodium/calcium exchange in retinal rod and cone photoreceptors by mediating the extrusion of one calcium ion and one potassium ion in exchange for four sodium ions. Mutations in this gene may play a role in congenital stationary night blindness. Alternatively spliced transcript variants encoding multiple isoforms have been observed for this gene. [provided by RefSeq, Dec 2011],function:Critical component of the visual transduction cascade, controlling the calcium concentration of outer segments during light and darkness. Light causes a rapid lowering of cytosolic free calcium in the outer segment of both retinal rod and cone photoreceptors and the light-induced lowering of calcium is caused by extrusion via this protein which plays a key role in the process of light adaptation. Transports 1 Ca(2+) and 1 K(+) in exchange for 4 Na(+),PTM:The uncleaved signal sequence is required for efficient membrane targeting and proper membrane integration.,similarity:Belongs to the sodium/potassium/calcium exchanger family. SLC24A subfamily.,tissue specificity:Found only in the outer segments of retinal rod photoreceptors.,

Research Area

Image Data



Western blot analysis of SLC24A1 Antibody. The lane on the right is blocked with the SLC24A1 peptide.



Western blot analysis of the lysates from HepG2 cells using SLC24A1 antibody.

Product Name: NCKX1 Rabbit Polyclonal Antibody
Catalog #: APRab14448



Note

For research use only.