

**Product Name: NCAM2 Rabbit Polyclonal Antibody**  
**Catalog #: APRab14437**



## Summary

<b>Production Name</b>	NCAM2 Rabbit Polyclonal Antibody
<b>Description</b>	Rabbit Polyclonal Antibody
<b>Host</b>	Rabbit
<b>Application</b>	WB
<b>Reactivity</b>	Human,Mouse,Rat

## Performance

<b>Conjugation</b>	Unconjugated
<b>Modification</b>	Unmodified
<b>Isotype</b>	IgG
<b>Clonality</b>	Polyclonal
<b>Form</b>	Liquid
<b>Storage</b>	Store at 4°C short term. Aliquot and store at -20°C long term. Avoid freeze/thaw cycles.
<b>Buffer</b>	Liquid in PBS containing 50% glycerol, 0.5% BSA and 0.02% New type preservative N.
<b>Purification</b>	Affinity purification

## Immunogen

<b>Gene Name</b>	NCAM2
<b>Alternative Names</b>	NCAM2; NCAM21; Neural cell adhesion molecule 2; N-CAM-2; NCAM-2
<b>Gene ID</b>	4685.0
<b>SwissProt ID</b>	O15394.The antiserum was produced against synthesized peptide derived from human NCAM2. AA range:264-313

## Application

<b>Dilution Ratio</b>	WB 1:500-2000
<b>Molecular Weight</b>	100kD

## Background

The protein encoded by this gene belongs to the immunoglobulin superfamily. It is a type I membrane protein and may

**Product Name: NCAM2 Rabbit Polyclonal Antibody**  
**Catalog #: APRab14437**

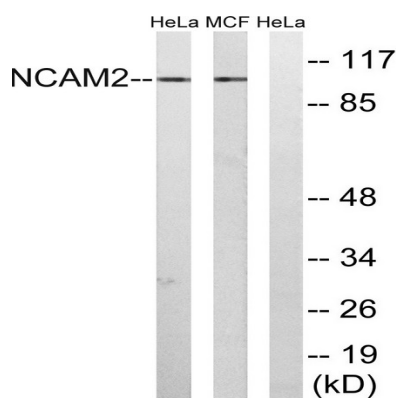


function in selective fasciculation and zone-to-zone projection of the primary olfactory axons. [provided by RefSeq, Jul 2008],function:May play important roles in selective fasciculation and zone-to-zone projection of the primary olfactory axons.,similarity:Contains 2 fibronectin type-III domains.,similarity:Contains 5 Ig-like C2-type (immunoglobulin-like) domains.,tissue specificity:Expressed most strongly in adult and fetal brain.,

## Research Area

Cell adhesion molecules (CAMs);Prion diseases;

## Image Data



Western blot analysis of lysates from MCF-7 and HeLa cells, using NCAM2 Antibody. The lane on the right is blocked with the synthesized peptide.

## Note

For research use only.