

Product Name: Nap1 Rabbit Polyclonal Antibody
Catalog #: APRab14405



Summary

Production Name	Nap1 Rabbit Polyclonal Antibody
Description	Rabbit Polyclonal Antibody
Host	Rabbit
Application	WB,ELISA
Reactivity	Human,Mouse,Rat

Performance

Conjugation	Unconjugated
Modification	Unmodified
Isotype	IgG
Clonality	Polyclonal
Form	Liquid
Storage	Store at 4°C short term. Aliquot and store at -20°C long term. Avoid freeze/thaw cycles.
Buffer	Liquid in PBS containing 50% glycerol, 0.5% BSA and 0.02% New type preservative N.
Purification	Affinity purification

Immunogen

Gene Name	AZI2
Alternative Names	AZI2; NAP1; 5-azacytidine-induced protein 2; NF-kappa-B-activating kinase-associated protein 1; Nak-associated protein 1; TILP
Gene ID	64343.0
SwissProt ID	Q9H6S1.The antiserum was produced against synthesized peptide derived from human AZI2. AA range:10-59

Application

Dilution Ratio	WB 1:500 - 1:2000. ELISA: 1:20000
Molecular Weight	48kD

Product Name: Nap1 Rabbit Polyclonal Antibody
Catalog #: AP Rab14405



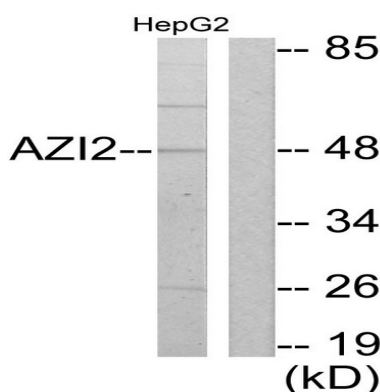
Background

AZI2, or NAP1, contributes to the activation of NF κ B (see MIM 164011)-dependent gene expression by activating IKK-related kinases, such as NAK (TBK1; MIM 604834) (Fujita et al., 2003 [PubMed 14560022]).[supplied by OMIM, Mar 2008],function:Activates serine/threonine-protein kinase TBK1 and facilitates its oligomerization. Enhances the phosphorylation of NF-kappa-B p65 subunit RELA by TBK1. Promotes TBK1-induced as well as TNF-alpha or PMA-induced activation of NF-kappa-B. Participates in IFN-beta promoter activation via TICAM1.,subunit:Interacts with IKBKE, TBK1 and TICAM1.,tissue specificity:Widely expressed. Abundant expression seen in the pancreas and testis.,

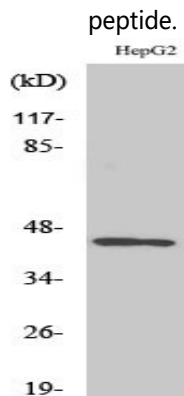
Research Area

RIG-I-like receptor;

Image Data



Western blot analysis of lysates from HepG2 cells, using AZI2 Antibody. The lane on the right is blocked with the synthesized peptide.



Western Blot analysis of various cells using Nap1 Polyclonal Antibody

Note

For research use only.