

Product Name: Na⁺ CP type II β Rabbit Polyclonal Antibody
Catalog #: APRab14373

Summary

Production Name	Na ⁺ CP type II β Rabbit Polyclonal Antibody
Description	Rabbit Polyclonal Antibody
Host	Rabbit
Application	WB,ELISA
Reactivity	Human,Mouse,Rat

Performance

Conjugation	Unconjugated
Modification	Unmodified
Isotype	IgG
Clonality	Polyclonal
Form	Liquid
Storage	Store at 4°C short term. Aliquot and store at -20°C long term. Avoid freeze/thaw cycles.
Buffer	Liquid in PBS containing 50% glycerol, 0.5% BSA and 0.02% New type preservative N.
Purification	Affinity purification

Immunogen

Gene Name	SCN2B
Alternative Names	SCN2B; Sodium channel subunit beta-2
Gene ID	6327.0
SwissProt ID	O60939.The antiserum was produced against synthesized peptide derived from human SCN2B. AA range:71-120

Application

Dilution Ratio	WB 1:500-2000; ELISA 2000-20000
Molecular Weight	24kD

Product Name: Na⁺ CP type II β Rabbit Polyclonal Antibody
Catalog #: AP Rab14373

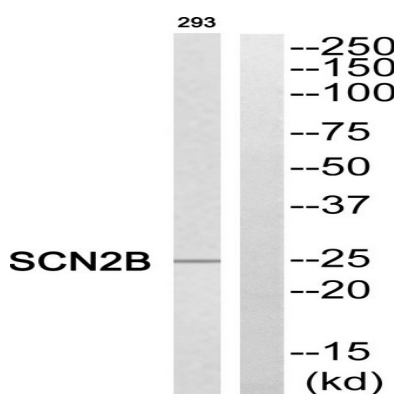


Background

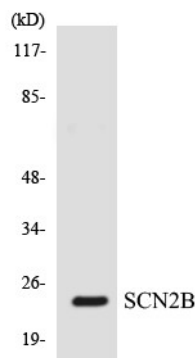
The protein encoded by this gene is the beta 2 subunit of the type II voltage-gated sodium channel. The encoded protein is involved in cell-cell adhesion and cell migration. Defects in this gene can be a cause of Brugada Syndrome, atrial fibrillation, or sudden infant death syndrome. [provided by RefSeq, Jul 2015],function:Crucial in the assembly, expression, and functional modulation of the heterotrimeric complex of the sodium channel. The subunit beta-2 causes an increase in the plasma membrane surface area and in its folding into microvilli. Interacts with TNFR may play a crucial role in clustering and regulation of activity of sodium channels at nodes of Ranvier.,similarity:Contains 1 Ig-like C2-type (immunoglobulin-like) domain.,subunit:The sodium channel consists of a pore-forming alpha subunit, beta-1 and beta-2 subunits. Beta-1 is non-covalently associated with alpha, while beta-2 is covalently linked by disulfide bonds. Interaction with SCN10A and TNFR.,tissue specificity:Brain specific.,

Research Area

Image Data



Western blot analysis of SCN2B Antibody. The lane on the right is blocked with the SCN2B peptide.



Western blot analysis of the lysates from HepG2 cells using SCN2B antibody.

Product Name: Na⁺ CP type II β Rabbit Polyclonal Antibody
Catalog #: APRab14373



Western Blot analysis of various cells using Na⁺ CP type II β Polyclonal Antibody

Note

For research use only.