

Product Name: N4BP1 Rabbit Polyclonal Antibody
Catalog #: APRab14370



Summary

Production Name	N4BP1 Rabbit Polyclonal Antibody
Description	Rabbit Polyclonal Antibody
Host	Rabbit
Application	WB,IHC
Reactivity	Human,Rat,Mouse

Performance

Conjugation	Unconjugated
Modification	Unmodified
Isotype	IgG
Clonality	Polyclonal
Form	Liquid
Storage	Store at 4°C short term. Aliquot and store at -20°C long term. Avoid freeze/thaw cycles.
Buffer	Liquid in PBS containing 50% glycerol, 0.5% BSA and 0.02% New type preservative N.
Purification	Affinity purification

Immunogen

Gene Name	N4BP1
Alternative Names	N4BP1; KIAA0615; NEDD4-binding protein 1; N4BP1
Gene ID	9683.0
SwissProt ID	O75113.The antiserum was produced against synthesized peptide derived from human N4BP1. AA range:383-432

Application

Dilution Ratio	WB 1:500 - 1:2000. IHC 1:100 - 1:300. ELISA: 1:40000..
Molecular Weight	100kD

Background

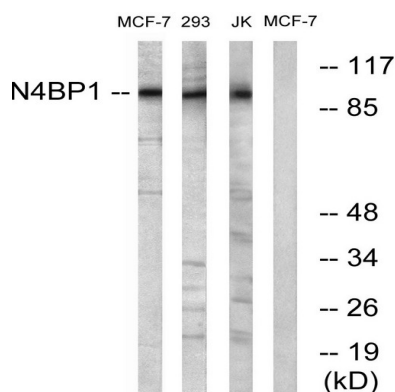
Product Name: N4BP1 Rabbit Polyclonal Antibody
Catalog #: AP Rab14370



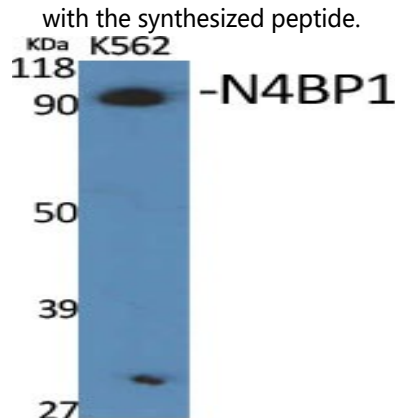
PTM: Monoubiquitinated., PTM: Phosphorylated upon DNA damage, probably by ATM or ATR., similarity: Belongs to the N4BP1 family., subcellular location: In discrete circular structures., subunit: Binds NEDD4., tissue specificity: Detected in heart, lung, brain, liver, skeletal muscle, pancreas, kidney, spleen, testis and ovary., PTM: Monoubiquitinated., PTM: Phosphorylated upon DNA damage, probably by ATM or ATR., similarity: Belongs to the N4BP1 family., subcellular location: In discrete circular structures., subunit: Binds NEDD4., tissue specificity: Detected in heart, lung, brain, liver, skeletal muscle, pancreas, kidney, spleen, testis and ovary.,

Research Area

Image Data

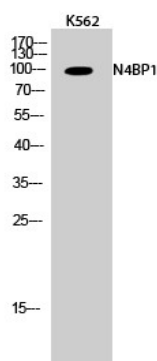


Western blot analysis of lysates from MCF-7 and Jurkat/293 cells, using N4BP1 Antibody. The lane on the right is blocked with the synthesized peptide.

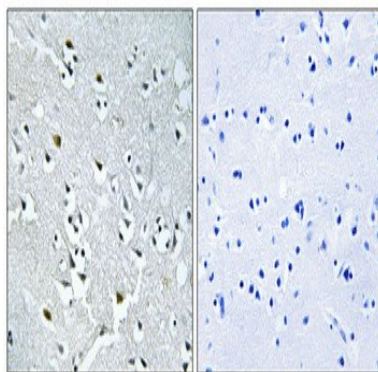


Western Blot analysis of various cells using N4BP1 Polyclonal Antibody cells nucleus extracted by Minute TM Cytoplasmic and Nuclear Fractionation kit (SC-003, Invent biotech, MN, USA) .

Product Name: N4BP1 Rabbit Polyclonal Antibody
Catalog #: APRab14370



Western Blot analysis of K562 cells using N4BP1 Polyclonal Antibody cells nucleus extracted by Minute TM Cytoplasmic and Nuclear Fractionation kit (SC-003, Invent biotech, MN, USA) .



Immunohistochemical analysis of paraffin-embedded Human brain. Antibody was diluted at 1:100 (4°, overnight) . High-pressure and temperature Tris-EDTA, pH 8.0 was used for antigen retrieval. Negative control (right) obtained from antibody was pre-absorbed by immunogen peptide.

Note

For research use only.