

**Product Name: MYH4 Rabbit Polyclonal Antibody**  
**Catalog #: APRab14296**



## Summary

<b>Production Name</b>	MYH4 Rabbit Polyclonal Antibody
<b>Description</b>	Rabbit Polyclonal Antibody
<b>Host</b>	Rabbit
<b>Application</b>	IHC,ELISA
<b>Reactivity</b>	Human,Rat,Mouse

## Performance

<b>Conjugation</b>	Unconjugated
<b>Modification</b>	Unmodified
<b>Isotype</b>	IgG
<b>Clonality</b>	Polyclonal
<b>Form</b>	Liquid
<b>Storage</b>	Store at 4°C short term. Aliquot and store at -20°C long term. Avoid freeze/thaw cycles.
<b>Buffer</b>	Liquid in PBS containing 50% glycerol, 0.5% BSA and 0.02% New type preservative N.
<b>Purification</b>	Affinity purification

## Immunogen

<b>Gene Name</b>	MYH4
<b>Alternative Names</b>	MYH4; Myosin-4; Myosin heavy chain 2b; MyHC-2b; Myosin heavy chain 4; Myosin heavy chain IIb; MyHC-IIb; Myosin heavy chain; skeletal muscle, fetal
<b>Gene ID</b>	4622.0
<b>SwissProt ID</b>	Q9Y623.The antiserum was produced against synthesized peptide derived from human MYH4. AA range:1677-1726

## Application

<b>Dilution Ratio</b>	IHC 1:100-1:300 ELISA: 1:5000
<b>Molecular Weight</b>	

## Background

**Product Name: MYH4 Rabbit Polyclonal Antibody**  
**Catalog #: APRab14296**

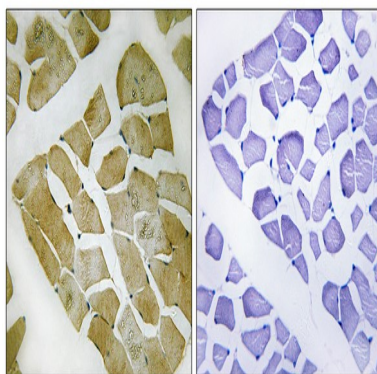


domain: The rodlike tail sequence is highly repetitive, showing cycles of a 28-residue repeat pattern composed of 4 heptapeptides, characteristic for alpha-helical coiled coils., function: Muscle contraction., miscellaneous: Each myosin heavy chain can be split into 1 light meromyosin (LMM) and 1 heavy meromyosin (HMM). It can later be split further into 2 globular subfragments (S1) and 1 rod-shaped subfragment (S2)., similarity: Contains 1 IQ domain., similarity: Contains 1 myosin head-like domain., subcellular location: Thick filaments of the myofibrils., subunit: Muscle myosin is a hexameric protein that consists of 2 heavy chain subunits (MHC), 2 alkali light chain subunits (MLC) and 2 regulatory light chain subunits (MLC-2)., domain: The rodlike tail sequence is highly repetitive, showing cycles of a 28-residue repeat pattern composed of 4 heptapeptides, characteristic for alpha-helical coiled coils., function: Muscle contraction., miscellaneous: Each myosin heavy chain can be split into 1 light meromyosin (LMM) and 1 heavy meromyosin (HMM). It can later be split further into 2 globular subfragments (S1) and 1 rod-shaped subfragment (S2)., similarity: Contains 1 IQ domain., similarity: Contains 1 myosin head-like domain., subcellular location: Thick filaments of the myofibrils., subunit: Muscle myosin is a hexameric protein that consists of 2 heavy chain subunits (MHC), 2 alkali light chain subunits (MLC) and 2 regulatory light chain subunits (MLC-2).,

## Research Area

Tight junction; Viral myocarditis;

## Image Data



Immunohistochemistry analysis of paraffin-embedded human skeletal muscle, using MYH4 Antibody. The picture on the right is blocked with the synthesized peptide.

## Note

For research use only.