

Product Name: MUC3A Rabbit Polyclonal Antibody
Catalog #: APRab14230



Summary

Production Name	MUC3A Rabbit Polyclonal Antibody
Description	Rabbit Polyclonal Antibody
Host	Rabbit
Application	WB,ELISA
Reactivity	Human,Rat,Mouse

Performance

Conjugation	Unconjugated
Modification	Unmodified
Isotype	IgG
Clonality	Polyclonal
Form	Liquid
Storage	Store at 4°C short term. Aliquot and store at -20°C long term. Avoid freeze/thaw cycles.
Buffer	Liquid in PBS containing 50% glycerol, and 0.02% New type preservative N.
Purification	Affinity purification

Immunogen

Gene Name	MUC3A MUC3
Alternative Names	
Gene ID	
SwissProt ID	Q02505.Synthesized peptide derived from part region of human protein

Application

Dilution Ratio	IHC 1:50-300
Molecular Weight	279kD

Background

The mucin genes encode epithelial glycoproteins, some of which are secreted and some membrane bound. Each of the genes contains at least one large domain of tandemly repeated sequence that encodes the peptide sequence rich in serine

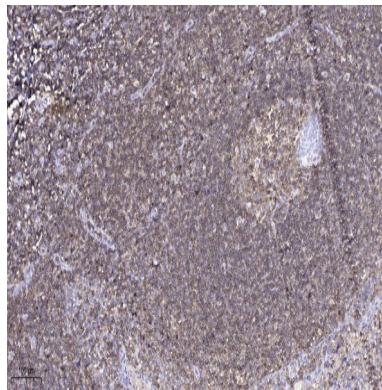
Product Name: MUC3A Rabbit Polyclonal Antibody
Catalog #: APRab14230



and/or threonine residues, which carries most of the O-linked glycosylation (Gendler and Spicer, 1995 [PubMed 7778880]). [supplied by OMIM, Aug 2008],alternative products:Additional isoforms seem to exist,function:Major glycoprotein component of a variety of mucus gels. Thought to provide a protective, lubricating barrier against particles and infectious agents at mucosal surfaces.,function:Major glycoprotein component of a variety of mucus gels. Thought to provide a protective, lubricating barrier against particles and infectious agents at mucosal surfaces. May be involved in ligand binding and intracellular signaling.,PTM:Highly O-glycosylated and probably also N-glycosylated.,similarity:Contains 1 EGF-like domain.,similarity:Contains 1 SEA domain.,tissue specificity:Broad specificity; small intestine, colon, colonic tumors, heart, liver, thymus, prostate, pancreas and gall bladder.,tissue specificity:Fetal and adult small intestine and fetal and adult colon.,

Research Area

Image Data



Immunohistochemical analysis of paraffin-embedded human tonsil. 1, Antibody was diluted at 1:200 (4° overnight) . 2, Tris-EDTA,pH9.0 was used for antigen retrieval. 3,Secondary antibody was diluted at 1:200 (room temperature, 45min) .

Note

For research use only.