

Summary

Production Name	MRP-S7 Rabbit Polyclonal Antibody
Description	Rabbit Polyclonal Antibody
Host	Rabbit
Application	IHC, WB, ELISA
Reactivity	Human, Mouse, Rat

Performance

Conjugation	Unconjugated
Modification	Unmodified
Isotype	IgG
Clonality	Polyclonal
Form	Liquid
Storage	Store at 4°C short term. Aliquot and store at -20°C long term. Avoid freeze/thaw cycles.
Buffer	Liquid in PBS containing 50% glycerol, 0.5% BSA and 0.02% New type preservative N.
Purification	Affinity purification

Immunogen

Gene Name	MRPS7
Alternative Names	MRPS7; 28S ribosomal protein S7; mitochondrial; MRP-S7; S7mt; bMRP-27a; bMRP27a
Gene ID	51081.0
SwissProt ID	Q9Y2R9. The antiserum was produced against synthesized peptide derived from human MRPS7. AA range: 91-140

Application

Dilution Ratio	WB 1:500 - 1:2000. IHC 1:100 - 1:300. ELISA: 1:40000..
Molecular Weight	24kD

Background

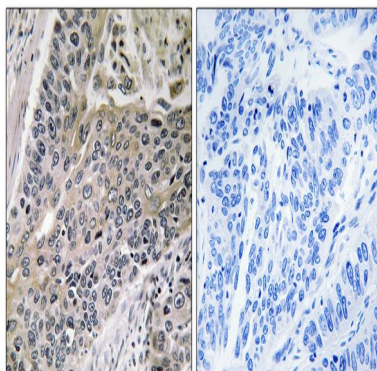
Product Name: MRP-S7 Rabbit Polyclonal Antibody
Catalog #: APRab14159



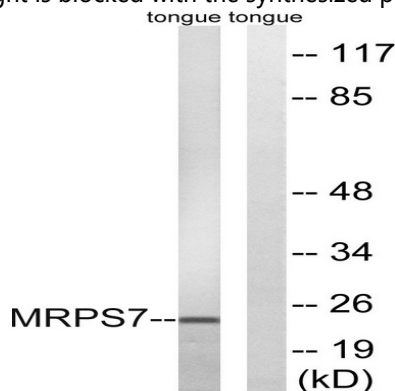
Mammalian mitochondrial ribosomal proteins are encoded by nuclear genes and help in protein synthesis within the mitochondrion. Mitochondrial ribosomes (mitoribosomes) consist of a small 28S subunit and a large 39S subunit. They have an estimated 75% protein to rRNA composition compared to prokaryotic ribosomes, where this ratio is reversed. Another difference between mammalian mitoribosomes and prokaryotic ribosomes is that the latter contain a 5S rRNA. Among different species, the proteins comprising the mitoribosome differ greatly in sequence, and sometimes in biochemical properties, which prevents easy recognition by sequence homology. This gene encodes a 28S subunit protein. In the prokaryotic ribosome, the comparable protein is thought to play an essential role in organizing the 3' domain of the 16S rRNA in the vicinity of the P- and A-sites. Pseudogenes corresponding to similarity: Belongs to the ribosomal protein S7P family, subunit: Component of the mitochondrial ribosome small subunit (28S) which comprises a 12S rRNA and about 30 distinct proteins.,

Research Area

Image Data

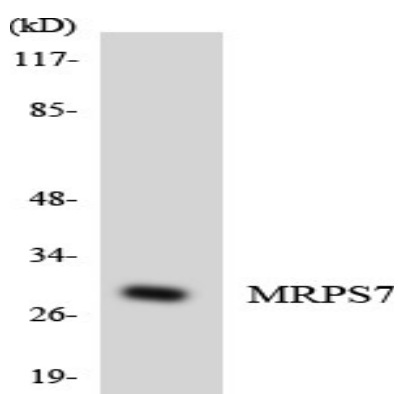


Immunohistochemistry analysis of paraffin-embedded human lung carcinoma tissue, using MRPS7 Antibody. The picture on the right is blocked with the synthesized peptide.



Western blot analysis of lysates from rat tongue cells, using MRPS7 Antibody. The lane on the right is blocked with the synthesized peptide.

Product Name: MRP-S7 Rabbit Polyclonal Antibody
Catalog #: APRab14159



Western blot analysis of the lysates from HeLa cells using MRPS7 antibody.

Note

For research use only.