

**Product Name: MRP-S27 Rabbit Polyclonal Antibody**  
**Catalog #: APRab14150**



## Summary

<b>Production Name</b>	MRP-S27 Rabbit Polyclonal Antibody
<b>Description</b>	Rabbit Polyclonal Antibody
<b>Host</b>	Rabbit
<b>Application</b>	WB,ELISA
<b>Reactivity</b>	Human,Rat,Mouse

## Performance

<b>Conjugation</b>	Unconjugated
<b>Modification</b>	Unmodified
<b>Isotype</b>	IgG
<b>Clonality</b>	Polyclonal
<b>Form</b>	Liquid
<b>Storage</b>	Store at 4°C short term. Aliquot and store at -20°C long term. Avoid freeze/thaw cycles.
<b>Buffer</b>	Liquid in PBS containing 50% glycerol, 0.5% BSA and 0.02% New type preservative N.
<b>Purification</b>	Affinity purification

## Immunogen

<b>Gene Name</b>	MRPS27
<b>Alternative Names</b>	MRPS27; KIAA0264; 28S ribosomal protein S27; mitochondrial; MRP-S27; S27mt
<b>Gene ID</b>	23107.0
<b>SwissProt ID</b>	Q92552.The antiserum was produced against synthesized peptide derived from human MRPS27. AA range:16-65

## Application

<b>Dilution Ratio</b>	WB 1:500-2000 ELISA 2000-20000
<b>Molecular Weight</b>	48kD

## Background

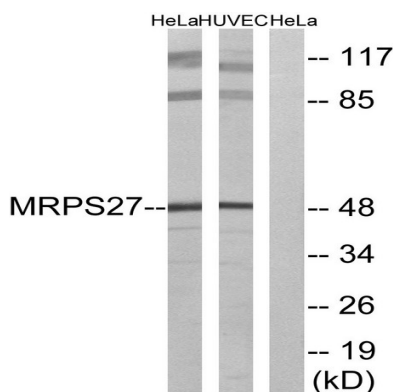
**Product Name: MRP-S27 Rabbit Polyclonal Antibody**  
**Catalog #: APRab14150**



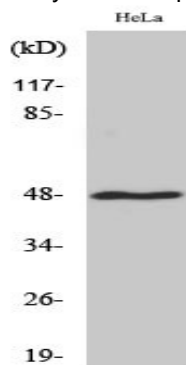
Mammalian mitochondrial ribosomal proteins are encoded by nuclear genes and help in protein synthesis within the mitochondrion. Mitochondrial ribosomes (mitoribosomes) consist of a small 28S subunit and a large 39S subunit. They have an estimated 75% protein to rRNA composition compared to prokaryotic ribosomes, where this ratio is reversed. Another difference between mammalian mitoribosomes and prokaryotic ribosomes is that the latter contain a 5S rRNA. Among different species, the proteins comprising the mitoribosome differ greatly in sequence, and sometimes in biochemical properties, which prevents easy recognition by sequence homology. This gene encodes a 28S subunit protein that may be a functional partner of the death associated protein 3 (DAP3). Alternative splicing results in multiple transcript variants encoding different isoforms. [provided by RefSeq, Nov 2013],similarity:Contains 2 PPR (pentatricopeptide) repeats.,subunit:Component of the mitochondrial ribosome small subunit (28S) which comprises a 12S rRNA and about 30 distinct proteins.,

## Research Area

## Image Data



Western blot analysis of lysates from HeLa and HUVEC cells, using MRPS27 Antibody. The lane on the right is blocked with the synthesized peptide.



Western Blot analysis of various cells using MRP-S27 Polyclonal Antibody

**Product Name: MRP-S27 Rabbit Polyclonal Antibody**  
**Catalog #: APRab14150**

---



**Note**

For research use only.