

Summary

Production Name	MRP-S25 Rabbit Polyclonal Antibody
Description	Rabbit Polyclonal Antibody
Host	Rabbit
Application	WB,ELISA
Reactivity	Human,Mouse,Rat

Performance

Conjugation	Unconjugated
Modification	Unmodified
Isotype	IgG
Clonality	Polyclonal
Form	Liquid
Storage	Store at 4°C short term. Aliquot and store at -20°C long term. Avoid freeze/thaw cycles.
Buffer	Liquid in PBS containing 50% glycerol, 0.5% BSA and 0.02% New type preservative N.
Purification	Affinity purification

Immunogen

Gene Name	MRPS25
Alternative Names	MRPS25; RPMS25; 28S ribosomal protein S25; mitochondrial; MRP-S25; S25mt
Gene ID	64432.0
SwissProt ID	P82663.The antiserum was produced against synthesized peptide derived from human MRPS25. AA range:124-173

Application

Dilution Ratio	WB 1:500-2000; ELISA 2000-20000
Molecular Weight	20kD

Background

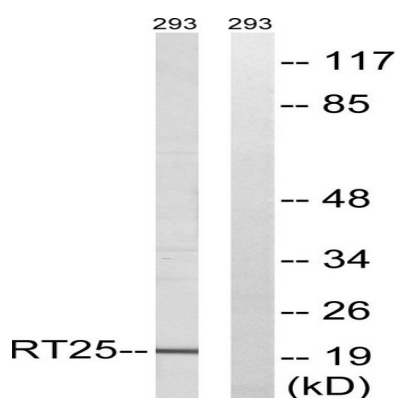
Product Name: MRP-S25 Rabbit Polyclonal Antibody
Catalog #: AP Rab14149



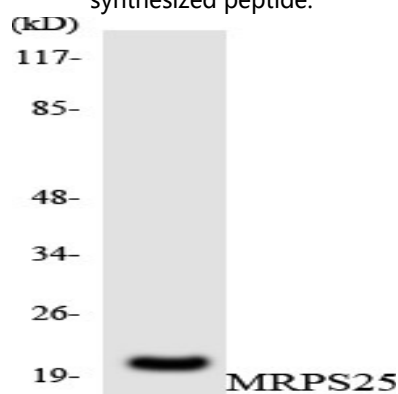
Mammalian mitochondrial ribosomal proteins are encoded by nuclear genes and help in protein synthesis within the mitochondrion. Mitochondrial ribosomes (mitoribosomes) consist of a small 28S subunit and a large 39S subunit. They have an estimated 75% protein to rRNA composition compared to prokaryotic ribosomes, where this ratio is reversed. Another difference between mammalian mitoribosomes and prokaryotic ribosomes is that the latter contain a 5S rRNA. Among different species, the proteins comprising the mitoribosome differ greatly in sequence, and sometimes in biochemical properties, which prevents easy recognition by sequence homology. This gene encodes a 28S subunit protein. A pseudogene corresponding to this gene is found on chromosome 4. Alternative splicing results in multiple transcript variants. [provided by RefSeq, Feb 2016], similarity: Belongs to the ribosomal protein S25/L51 family., subunit: Component of the mitochondrial ribosome small subunit (28S) which comprises a 12S rRNA and about 30 distinct proteins.,

Research Area

Image Data



Western blot analysis of lysates from 293 cells, using MRPS25 Antibody. The lane on the right is blocked with the synthesized peptide.



Western blot analysis of the lysates from HepG2 cells using MRPS25 antibody.

Product Name: MRP-S25 Rabbit Polyclonal Antibody
Catalog #: APRab14149



Western Blot analysis of various cells using MRP-S25 Polyclonal Antibody diluted at 1: 2000

Note

For research use only.