

Product Name: MRP-S2 Rabbit Polyclonal Antibody
Catalog #: APRab14145



Summary

Production Name	MRP-S2 Rabbit Polyclonal Antibody
Description	Rabbit Polyclonal Antibody
Host	Rabbit
Application	WB,IHC,ELISA
Reactivity	Human,Rat,Mouse

Performance

Conjugation	Unconjugated
Modification	Unmodified
Isotype	IgG
Clonality	Polyclonal
Form	Liquid
Storage	Store at 4°C short term. Aliquot and store at -20°C long term. Avoid freeze/thaw cycles.
Buffer	Liquid in PBS containing 50% glycerol, 0.5% BSA and 0.02% New type preservative N.
Purification	Affinity purification

Immunogen

Gene Name	MRPS2
Alternative Names	MRPS2; CGI-91; 28S ribosomal protein S2; mitochondrial; MRP-S2; S2mt
Gene ID	51116.0
SwissProt ID	Q9Y399.The antiserum was produced against synthesized peptide derived from human MRPS2. AA range:236-285

Application

Dilution Ratio	WB 1:500 - 1:2000. IHC 1:100 - 1:300. ELISA: 1:5000..
Molecular Weight	33kD

Background

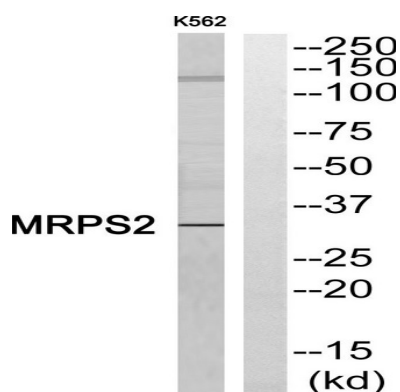
Product Name: MRP-S2 Rabbit Polyclonal Antibody
Catalog #: APRab14145



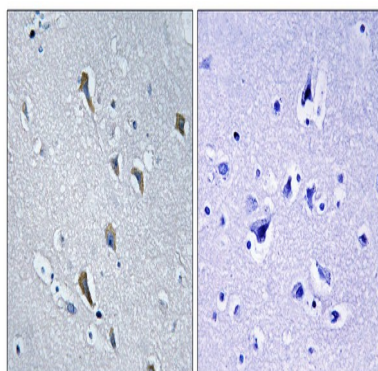
Mammalian mitochondrial ribosomal proteins are encoded by nuclear genes and help in protein synthesis within the mitochondrion. Mitochondrial ribosomes (mitoribosomes) consist of a small 28S subunit and a large 39S subunit. They have an estimated 75% protein to rRNA composition compared to prokaryotic ribosomes, where this ratio is reversed. Another difference between mammalian mitoribosomes and prokaryotic ribosomes is that the latter contain a 5S rRNA. Among different species, the proteins comprising the mitoribosome differ greatly in sequence, and sometimes in biochemical properties, which prevents easy recognition by sequence homology. This gene encodes a 28S subunit protein that belongs to the ribosomal protein S2 family. Alternatively spliced transcript variants have been observed for this gene. [provided by RefSeq, May 2012],sequence caution:Wrong choice of frame.,similarity:Belongs to the ribosomal protein S2P family.,subunit:Component of the mitochondrial ribosome small subunit (28S) which comprises a 12S rRNA and about 30 distinct proteins.,

Research Area

Image Data

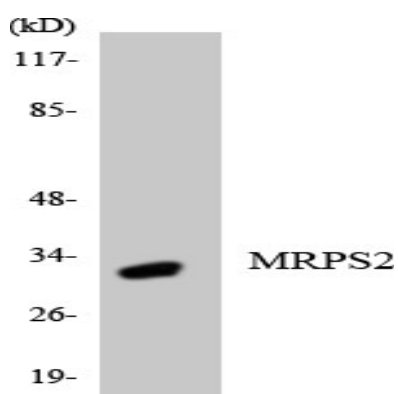


Western blot analysis of MRPS2 Antibody. The lane on the right is blocked with the MRPS2 peptide.



Immunohistochemistry analysis of paraffin-embedded human brain, using MRPS2 Antibody. The lane on the right is blocked with the MRPS2 peptide.

Product Name: MRP-S2 Rabbit Polyclonal Antibody
Catalog #: APRab14145



Western blot analysis of the lysates from HepG2 cells using MRPS2 antibody.

Note

For research use only.