

Summary

Production Name	MRP-L50 Rabbit Polyclonal Antibody
Description	Rabbit Polyclonal Antibody
Host	Rabbit
Application	WB,ELISA
Reactivity	Human,Rat,Mouse

Performance

Conjugation	Unconjugated
Modification	Unmodified
Isotype	IgG
Clonality	Polyclonal
Form	Liquid
Storage	Store at 4°C short term. Aliquot and store at -20°C long term. Avoid freeze/thaw cycles.
Buffer	Liquid in PBS containing 50% glycerol, 0.5% BSA and 0.02% New type preservative N.
Purification	Affinity purification

Immunogen

Gene Name	MRPL50
Alternative Names	MRPL50; 39S ribosomal protein L50; mitochondrial; L50mt; MRP-L50
Gene ID	54534.0
SwissProt ID	Q8N5N7.The antiserum was produced against synthesized peptide derived from human MRPL50. AA range:109-158

Application

Dilution Ratio	WB 1:500-2000 ELISA 2000-20000
Molecular Weight	22kD

Background

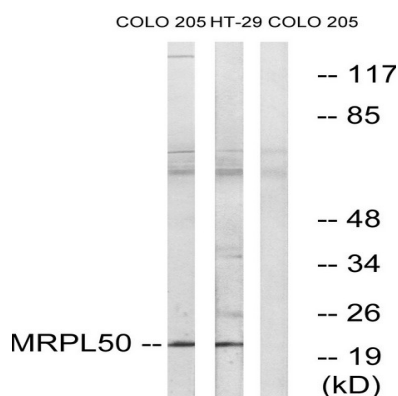
Product Name: MRP-L50 Rabbit Polyclonal Antibody
Catalog #: APRab14135



Mammalian mitochondrial ribosomal proteins are encoded by nuclear genes and help in protein synthesis within the mitochondrion. Mitochondrial ribosomes (mitoribosomes) consist of a small 28S subunit and a large 39S subunit. They have an estimated 75% protein to rRNA composition compared to prokaryotic ribosomes, where this ratio is reversed. Another difference between mammalian mitoribosomes and prokaryotic ribosomes is that the latter contain a 5S rRNA. Among different species, the proteins comprising the mitoribosome differ greatly in sequence, and sometimes in biochemical properties, which prevents easy recognition by sequence homology. This gene encodes a putative 39S subunit protein and belongs to the L47P ribosomal protein family. Pseudogenes corresponding to this gene are found on chromosomes 2p, 2q, 5p, and 10q. [provided by RefSeq, Jul 2008],

Research Area

Image Data



Western blot analysis of lysates from COLO and HT-29 cells, using MRPL50 Antibody. The lane on the right is blocked with the synthesized peptide.



Western Blot analysis of various cells using MRP-L50 Polyclonal Antibody

Note

For research use only.

Product Name: MRP-L50 Rabbit Polyclonal Antibody
Catalog #: APRab14135

