

## Summary

<b>Production Name</b>	MRP-L40 Rabbit Polyclonal Antibody
<b>Description</b>	Rabbit Polyclonal Antibody
<b>Host</b>	Rabbit
<b>Application</b>	IHC,WB,
<b>Reactivity</b>	Human,Rat,Mouse

## Performance

<b>Conjugation</b>	Unconjugated
<b>Modification</b>	Unmodified
<b>Isotype</b>	IgG
<b>Clonality</b>	Polyclonal
<b>Form</b>	Liquid
<b>Storage</b>	Store at 4°C short term. Aliquot and store at -20°C long term. Avoid freeze/thaw cycles.
<b>Buffer</b>	Liquid in PBS containing 50% glycerol, 0.5% BSA and 0.02% New type preservative N.
<b>Purification</b>	Affinity purification

## Immunogen

<b>Gene Name</b>	MRPL40 MRPL40; NLVCF; URIM; 39S ribosomal protein L40; mitochondrial; L40mt; MRP-L40;
<b>Alternative Names</b>	Nuclear localization signal-containing protein deleted in velocardiofacial syndrome; Up-regulated in metastasis
<b>Gene ID</b>	64976.0
<b>SwissProt ID</b>	Q9NQ50.The antiserum was produced against synthesized peptide derived from human MRPL40. AA range:101-150

## Application

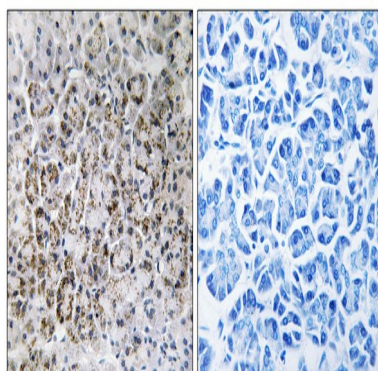
<b>Dilution Ratio</b>	WB 1:500 - 1:2000. IHC 1:100 - 1:300. ELISA: 1:40000..
<b>Molecular Weight</b>	24kD

## Background

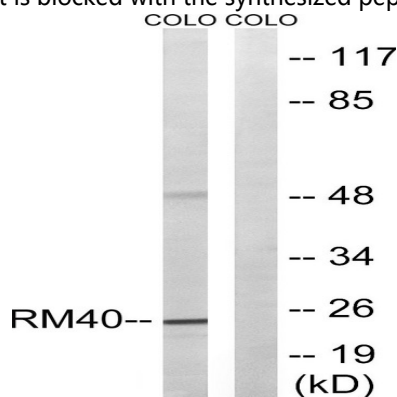
Mammalian mitochondrial ribosomal proteins are encoded by nuclear genes and help in protein synthesis within the mitochondrion. Mitochondrial ribosomes (mitoribosomes) consist of a small 28S subunit and a large 39S subunit. They have an estimated 75% protein to rRNA composition compared to prokaryotic ribosomes, where this ratio is reversed. Another difference between mammalian mitoribosomes and prokaryotic ribosomes is that the latter contain a 5S rRNA. Among different species, the proteins comprising the mitoribosome differ greatly in sequence, and sometimes in biochemical properties, which prevents easy recognition by sequence homology. This gene encodes a 39S subunit protein. Deletions in this gene may contribute to the etiology of velo-cardio-facial syndrome and DiGeorge syndrome. [provided by RefSeq, Jul 2008], tissue specificity: Ubiquitous.,

## Research Area

## Image Data

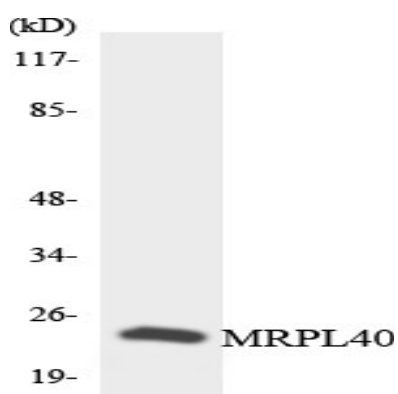


Immunohistochemistry analysis of paraffin-embedded human pancreas tissue, using MRPL40 Antibody. The picture on the right is blocked with the synthesized peptide.



Western blot analysis of lysates from COLO cells, using MRPL40 Antibody. The lane on the right is blocked with the synthesized peptide.

**Product Name: MRP-L40 Rabbit Polyclonal Antibody**  
**Catalog #: APRab14128**



Western blot analysis of the lysates from Jurkat cells using MRPL40 antibody.



Western Blot analysis of various cells using MRP-L40 Polyclonal Antibody diluted at 1: 1000

## **Note**

For research use only.