

Product Name: MRP-L32 Rabbit Polyclonal Antibody
Catalog #: APRab14122



Summary

| | |
|------------------------|------------------------------------|
| Production Name | MRP-L32 Rabbit Polyclonal Antibody |
| Description | Rabbit Polyclonal Antibody |
| Host | Rabbit |
| Application | IF, WB, IHC |
| Reactivity | Human, Rat, Mouse |

Performance

| | |
|---------------------|--|
| Conjugation | Unconjugated |
| Modification | Unmodified |
| Isotype | IgG |
| Clonality | Polyclonal |
| Form | Liquid |
| Storage | Store at 4°C short term. Aliquot and store at -20°C long term. Avoid freeze/thaw cycles. |
| Buffer | Liquid in PBS containing 50% glycerol, 0.5% BSA and 0.02% New type preservative N. |
| Purification | Affinity purification |

Immunogen

| | |
|--------------------------|---|
| Gene Name | MRPL32 |
| Alternative Names | MRPL32; HSPC283; 39S ribosomal protein L32; mitochondrial; L32mt; MRP-L32 |
| Gene ID | 64983.0 |
| SwissProt ID | Q9BYC8. The antiserum was produced against synthesized peptide derived from human MRPL32. AA range: 101-150 |

Application

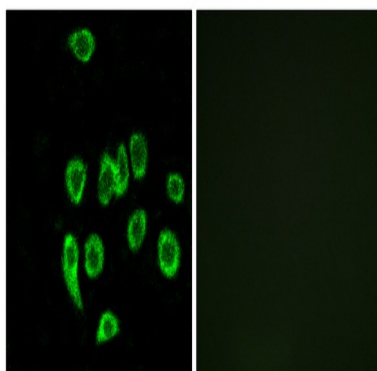
| | |
|-------------------------|--|
| Dilution Ratio | WB 1:500 - 1:2000. IHC 1:100 - 1:300. IF 1:200 - 1:1000. ELISA: 1:40000. Not yet tested in other applications. |
| Molecular Weight | 21kD |

Background

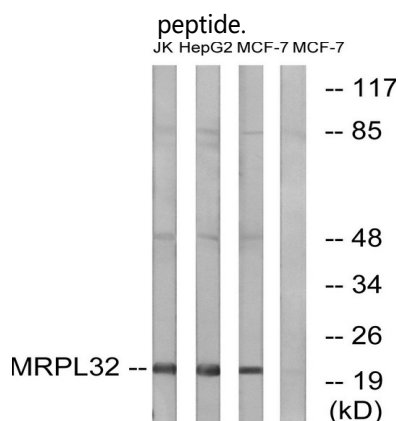
Mammalian mitochondrial ribosomal proteins are encoded by nuclear genes and help in protein synthesis within the mitochondrion. Mitochondrial ribosomes (mitoribosomes) consist of a small 28S subunit and a large 39S subunit. They have an estimated 75% protein to rRNA composition compared to prokaryotic ribosomes, where this ratio is reversed. Another difference between mammalian mitoribosomes and prokaryotic ribosomes is that the latter contain a 5S rRNA. Among different species, the proteins comprising the mitoribosome differ greatly in sequence, and sometimes in biochemical properties, which prevents easy recognition by sequence homology. This gene encodes a 39S subunit protein that belongs to the L32 ribosomal protein family. A pseudogene corresponding to this gene is found on chromosome Xp. [provided by RefSeq, Jul 2008],similarity:Belongs to the ribosomal protein L32P family.,

Research Area

Image Data

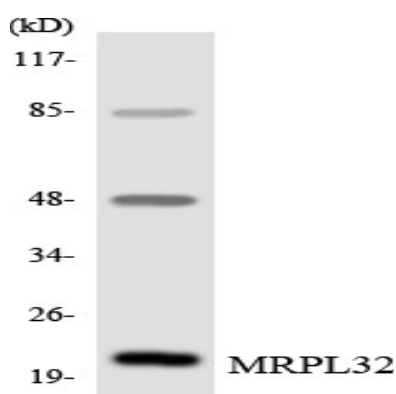


Immunofluorescence analysis of A549 cells, using MRPL32 Antibody. The picture on the right is blocked with the synthesized

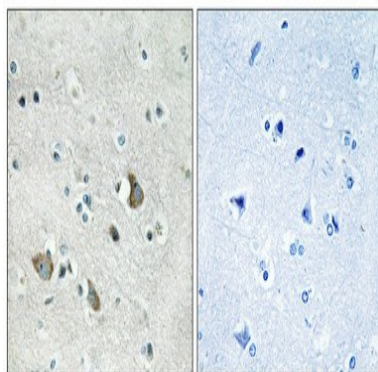


Western blot analysis of lysates from MCF-7, HepG2, and Jurkat cells, using MRPL32 Antibody. The lane on the right is blocked with the synthesized peptide.

Product Name: MRP-L32 Rabbit Polyclonal Antibody
Catalog #: APRab14122



Western blot analysis of the lysates from HeLa cells using MRPL32 antibody.



Immunohistochemical analysis of paraffin-embedded Human brain. Antibody was diluted at 1:100 (4°, overnight). High-pressure and temperature Tris-EDTA, pH 8.0 was used for antigen retrieval. Negative control (right) obtained from antibody was pre-absorbed by immunogen peptide.

Note

For research use only.