

Summary

Production Name	MRP-L20 Rabbit Polyclonal Antibody
Description	Rabbit Polyclonal Antibody
Host	Rabbit
Application	WB,IHC,ELISA
Reactivity	Human,Mouse,Rat

Performance

Conjugation	Unconjugated
Modification	Unmodified
Isotype	IgG
Clonality	Polyclonal
Form	Liquid
Storage	Store at 4°C short term. Aliquot and store at -20°C long term. Avoid freeze/thaw cycles.
Buffer	Liquid in PBS containing 50% glycerol, 0.5% BSA and 0.02% New type preservative N.
Purification	Affinity purification

Immunogen

Gene Name	MRPL20
Alternative Names	MRPL20; 39S ribosomal protein L20; mitochondrial; L20mt; MRP-L20
Gene ID	55052.0
SwissProt ID	Q9BYC9.The antiserum was produced against synthesized peptide derived from human MRPL20. AA range:100-149

Application

Dilution Ratio	WB 1:500 - 1:2000. IHC 1:100 - 1:300. ELISA: 1:40000..
Molecular Weight	22kD

Background

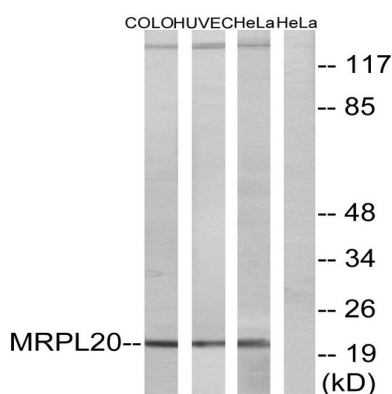
Product Name: MRP-L20 Rabbit Polyclonal Antibody
Catalog #: APRab14117



Mammalian mitochondrial ribosomal proteins are encoded by nuclear genes and help in protein synthesis within the mitochondrion. Mitochondrial ribosomes (mitoribosomes) consist of a small 28S subunit and a large 39S subunit. They have an estimated 75% protein to rRNA composition compared to prokaryotic ribosomes, where this ratio is reversed. Another difference between mammalian mitoribosomes and prokaryotic ribosomes is that the latter contain a 5S rRNA. Among different species, the proteins comprising the mitoribosome differ greatly in sequence, and sometimes in biochemical properties, which prevents easy recognition by sequence homology. This gene encodes a 39S subunit protein. A pseudogene corresponding to this gene is found on chromosome 21q. Alternative splicing results in multiple transcript variants encoding different isoforms. [provided by RefSeq, Jan 2016],similarity:Belongs to the ribosomal protein L20P family.,

Research Area

Image Data

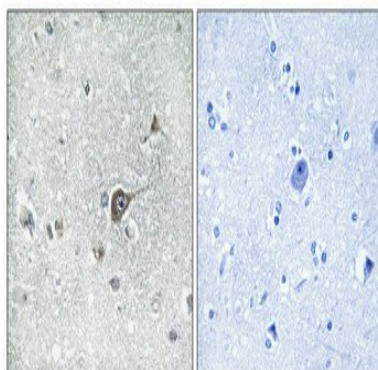


Western blot analysis of lysates from HeLa, HUVEC, and COLO cells, using MRPL20 Antibody. The lane on the right is blocked with the synthesized peptide.



Western Blot analysis of various cells using MRP-L20 Polyclonal Antibody

Product Name: MRP-L20 Rabbit Polyclonal Antibody
Catalog #: APRab14117



Immunohistochemical analysis of paraffin-embedded Human brain. Antibody was diluted at 1:100 (4°,overnight) . High-pressure and temperature Tris-EDTA,pH8.0 was used for antigen retrieval. Negative contrl (right) obtaned from antibody was pre-absorbed by immunogen peptide.

Note

For research use only.