

Summary

Production Name	MRP-L16 Rabbit Polyclonal Antibody
Description	Rabbit Polyclonal Antibody
Host	Rabbit
Application	IHC, WB,
Reactivity	Human, Rat, Mouse

Performance

Conjugation	Unconjugated
Modification	Unmodified
Isotype	IgG
Clonality	Polyclonal
Form	Liquid
Storage	Store at 4°C short term. Aliquot and store at -20°C long term. Avoid freeze/thaw cycles.
Buffer	Liquid in PBS containing 50% glycerol, 0.5% BSA and 0.02% New type preservative N.
Purification	Affinity purification

Immunogen

Gene Name	MRPL16
Alternative Names	MRPL16; PNAS-111; 39S ribosomal protein L16; mitochondrial; L16mt; MRP-L16
Gene ID	54948.0
SwissProt ID	Q9NX20. The antiserum was produced against synthesized peptide derived from human MRPL16. AA range: 171-220

Application

Dilution Ratio	WB 1:500 - 1:2000. IHC 1:100 - 1:300. ELISA: 1:40000..
Molecular Weight	28kD

Background

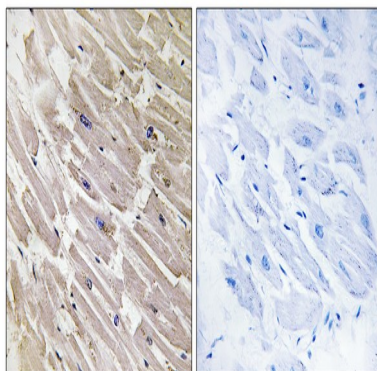
Product Name: MRP-L16 Rabbit Polyclonal Antibody
Catalog #: APRab14114



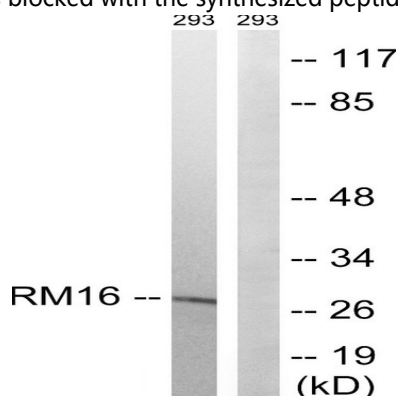
Mammalian mitochondrial ribosomal proteins are encoded by nuclear genes and help in protein synthesis within the mitochondrion. Mitochondrial ribosomes (mitoribosomes) consist of a small 28S subunit and a large 39S subunit. They have an estimated 75% protein to rRNA composition compared to prokaryotic ribosomes, where this ratio is reversed. Another difference between mammalian mitoribosomes and prokaryotic ribosomes is that the latter contain a 5S rRNA. Among different species, the proteins comprising the mitoribosome differ greatly in sequence, and sometimes in biochemical properties, which prevents easy recognition by sequence homology. This gene encodes a 39S subunit protein. [provided by RefSeq, Jul 2008],function:Component of the large subunit of mitochondrial ribosome.,similarity:Belongs to the ribosomal protein L16P family.,

Research Area

Image Data

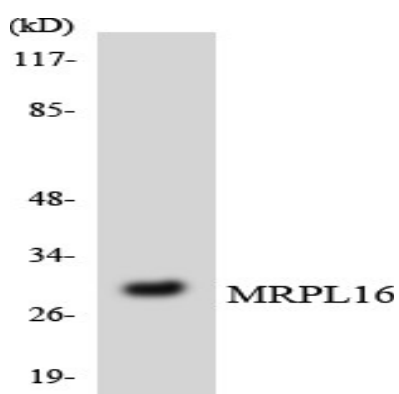


Immunohistochemistry analysis of paraffin-embedded human heart tissue, using MRPL16 Antibody. The picture on the right is blocked with the synthesized peptide.



Western blot analysis of lysates from 293 cells, using MRPL16 Antibody. The lane on the right is blocked with the synthesized peptide.

Product Name: MRP-L16 Rabbit Polyclonal Antibody
Catalog #: APRab14114



Western blot analysis of the lysates from HeLa cells using MRPL16 antibody.



Western Blot analysis of various cells using MRP-L16 Polyclonal Antibody diluted at 1: 2000

Note

For research use only.