

Product Name: Mos Rabbit Polyclonal Antibody
Catalog #: APRab14033



Summary

Production Name	Mos Rabbit Polyclonal Antibody
Description	Rabbit Polyclonal Antibody
Host	Rabbit
Application	WB,ELISA
Reactivity	Human,Rat,Mouse

Performance

Conjugation	Unconjugated
Modification	Unmodified
Isotype	IgG
Clonality	Polyclonal
Form	Liquid
Storage	Store at 4°C short term. Aliquot and store at -20°C long term. Avoid freeze/thaw cycles.
Buffer	Liquid in PBS containing 50% glycerol, 0.5% BSA and 0.02% New type preservative N.
Purification	Affinity purification

Immunogen

Gene Name	MOS
Alternative Names	MOS; Proto-oncogene serine/threonine-protein kinase mos; Oocyte maturation factor mos; Proto-oncogene c-Mos
Gene ID	4342.0
SwissProt ID	P00540.The antiserum was produced against synthesized peptide derived from human MOS. AA range:61-110

Application

Dilution Ratio	WB 1:500-2000 ELISA 2000-20000
Molecular Weight	40kD

Product Name: Mos Rabbit Polyclonal Antibody
Catalog #: APRab14033



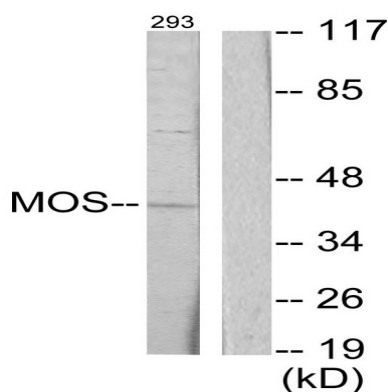
Background

MOS is a serine/threonine kinase that activates the MAP kinase cascade through direct phosphorylation of the MAP kinase activator MEK (MAP2K1; MIM 176872) (Prasad et al., 2008 [PubMed 18246541]).[supplied by OMIM, Jul 2009],catalytic activity:ATP + a protein = ADP + a phosphoprotein.,similarity:Belongs to the protein kinase superfamily. Ser/Thr protein kinase family.,similarity:Contains 1 protein kinase domain.,tissue specificity:Expressed specifically in testis during spermatogenesis.,

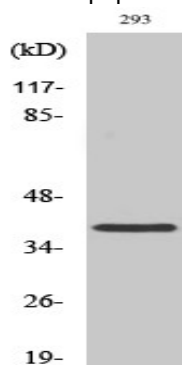
Research Area

Regulation of Actin Dynamics; MAPK_ERK_Growth;MAPK_G_Protein; Cell Growth

Image Data



Western blot analysis of lysates from 293 cells, using MOS Antibody. The lane on the right is blocked with the synthesized peptide.



Western Blot analysis of various cells using Mos Polyclonal Antibody

Note

For research use only.