

**Product Name: Mob3A/B Rabbit Polyclonal Antibody**  
**Catalog #: APRab14015**



## Summary

<b>Production Name</b>	Mob3A/B Rabbit Polyclonal Antibody
<b>Description</b>	Rabbit Polyclonal Antibody
<b>Host</b>	Rabbit
<b>Application</b>	WB,IHC,ELISA
<b>Reactivity</b>	Human,Mouse

## Performance

<b>Conjugation</b>	Unconjugated
<b>Modification</b>	Unmodified
<b>Isotype</b>	IgG
<b>Clonality</b>	Polyclonal
<b>Form</b>	Liquid
<b>Storage</b>	Store at 4°C short term. Aliquot and store at -20°C long term. Avoid freeze/thaw cycles.
<b>Buffer</b>	Liquid in PBS containing 50% glycerol, 0.5% BSA and 0.02% New type preservative N.
<b>Purification</b>	Affinity purification

## Immunogen

<b>Gene Name</b>	MMOBKL2A/MMOBKL2B
<b>Alternative Names</b>	MOB3A; MOBKL2A; MOB kinase activator 3A; MOB-LAK; Mob1 homolog 2A; Mps one binder kinase activator-like 2A; MOB3B; MOBKL2B; MOB kinase activator 3B; Mob1 homolog 2b; Mps one binder kinase activator-like 2B
<b>Gene ID</b>	126308.0
<b>SwissProt ID</b>	Q96BX8.Synthesized peptide derived from Mob3A/B . at AA range: 1-80

## Application

<b>Dilution Ratio</b>	WB 1:500 - 1:2000. IHC-p: 1:100-1:300. ELISA: 1:10000..
<b>Molecular Weight</b>	25kD

**Product Name: Mob3A/B Rabbit Polyclonal Antibody**  
**Catalog #: APRab14015**

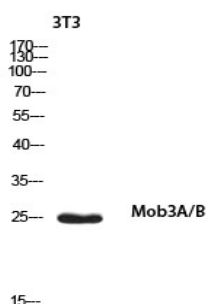


## Background

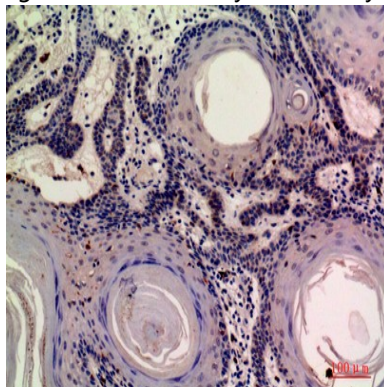
function:May regulate the activity of kinases.,sequence caution:Chimera. There is an inclusion of DNA from another gene in position 141.,similarity:Belongs to the MOB1/phocein family.,function:May regulate the activity of kinases.,sequence caution:Chimera. There is an inclusion of DNA from another gene in position 141.,similarity:Belongs to the MOB1/phocein family.,

## Research Area

## Image Data



Western blot analysis of 3T3 using Mob3A/B antibody.. Secondary antibody was diluted at 1:20000



Immunohistochemical analysis of paraffin-embedded human-skin, antibody was diluted at 1:200

## Note

For research use only.