

Summary

Production Name	MMP-11 Rabbit Polyclonal Antibody
Description	Rabbit Polyclonal Antibody
Host	Rabbit
Application	IF,IHC,WB,ELISA
Reactivity	Human,Mouse,Rat

Performance

Conjugation	Unconjugated
Modification	Unmodified
Isotype	IgG
Clonality	Polyclonal
Form	Liquid
Storage	Store at 4°C short term. Aliquot and store at -20°C long term. Avoid freeze/thaw cycles.
Buffer	Liquid in PBS containing 50% glycerol, 0.5% BSA and 0.02% New type preservative N.
Purification	Affinity purification

Immunogen

Gene Name	MMP11
Alternative Names	MMP11; STMY3; Stromelysin-3; SL-3; ST3; Matrix metalloproteinase-11; MMP-11
Gene ID	4320.0
SwissProt ID	P24347.The antiserum was produced against synthesized peptide derived from human MMP-11. AA range:61-110

Application

Dilution Ratio	WB 1:500 - 1:2000. IHC 1:100 - 1:300. IF 1:200 - 1:1000. ELISA: 1:20000. Not yet tested in other applications.
Molecular Weight	60kD

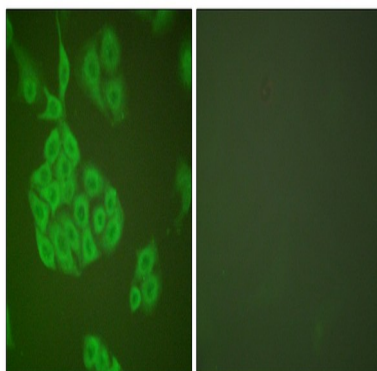
Background

Proteins of the matrix metalloproteinase (MMP) family are involved in the breakdown of extracellular matrix in normal physiological processes, such as embryonic development, reproduction, and tissue remodeling, as well as in disease processes, such as arthritis and metastasis. Most MMPs are secreted as inactive proproteins which are activated when cleaved by extracellular proteinases. However, the enzyme encoded by this gene is activated intracellularly by furin within the constitutive secretory pathway. Also in contrast to other MMPs, this enzyme cleaves alpha 1-proteinase inhibitor but weakly degrades structural proteins of the extracellular matrix. [provided by RefSeq, Jul 2008],cofactor: Binds 1 calcium ion per subunit.,cofactor: Binds 2 zinc ions per subunit.,domain: The conserved cysteine present in the cysteine-switch motif binds the catalytic zinc ion, thus inhibiting the enzyme. The dissociation of the cysteine from the zinc ion upon the activation-peptide release activates the enzyme.,function: May play an important role in the progression of epithelial malignancies.,PTM: The precursor is cleaved by a furin endopeptidase.,similarity: Belongs to the peptidase M10A family.,similarity: Contains 4 hemopexin-like domains.,tissue specificity: Specifically expressed in stromal cells of breast carcinomas.,

Research Area

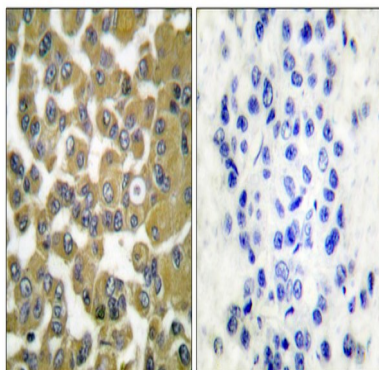
Angiogenesis

Image Data

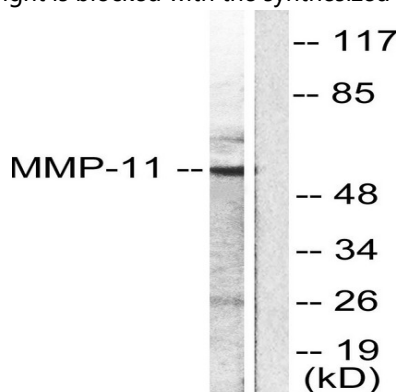


Immunofluorescence analysis of A549 cells, using MMP-11 Antibody. The picture on the right is blocked with the synthesized peptide.

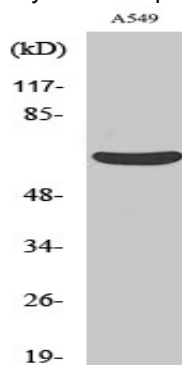
Product Name: MMP-11 Rabbit Polyclonal Antibody
Catalog #: APRab13975



Immunohistochemistry analysis of paraffin-embedded human breast carcinoma tissue, using MMP-11 Antibody. The picture on the right is blocked with the synthesized peptide.

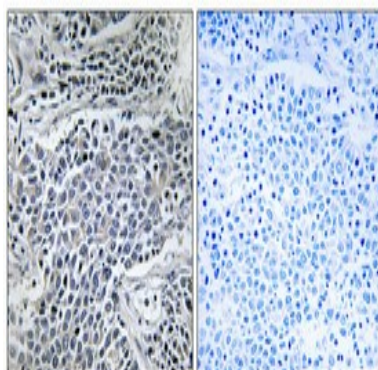


Western blot analysis of lysates from A549 cells, using MMP-11 Antibody. The lane on the right is blocked with the synthesized peptide.



Western Blot analysis of various cells using MMP-11 Polyclonal Antibody diluted at 1: 500

Product Name: MMP-11 Rabbit Polyclonal Antibody
Catalog #: APRab13975



Immunohistochemical analysis of paraffin-embedded Human lung cancer. Antibody was diluted at 1:100 (4°,overnight) . High-pressure and temperature Tris-EDTA,pH8.0 was used for antigen retrieval. Negative contrl (right) obtaned from antibody was pre-absorbed by immunogen peptide.

Note

For research use only.