

Product Name: MKP-4 Rabbit Polyclonal Antibody
Catalog #: APRab13935



Summary

Production Name	MKP-4 Rabbit Polyclonal Antibody
Description	Rabbit Polyclonal Antibody
Host	Rabbit
Application	IF,IHC,WB,
Reactivity	Human,Mouse,Rat

Performance

Conjugation	Unconjugated
Modification	Unmodified
Isotype	IgG
Clonality	Polyclonal
Form	Liquid
Storage	Store at 4°C short term. Aliquot and store at -20°C long term. Avoid freeze/thaw cycles.
Buffer	Liquid in PBS containing 50% glycerol, 0.5% BSA and 0.02% New type preservative N.
Purification	Affinity purification

Immunogen

Gene Name	DUSP9
Alternative Names	DUSP9; MKP4; Dual specificity protein phosphatase 9; Mitogen-activated protein kinase phosphatase 4; MAP kinase phosphatase 4; MKP-4
Gene ID	1852.0
SwissProt ID	Q99956.The antiserum was produced against synthesized peptide derived from human DUSP9. AA range:151-200

Application

Dilution Ratio	WB 1:500 - 1:2000 IHC 1:100 - 1:300. IF 1:200 - 1:1000. ELISA: 1:20000. Not yet tested in other applications.
Molecular Weight	42kD

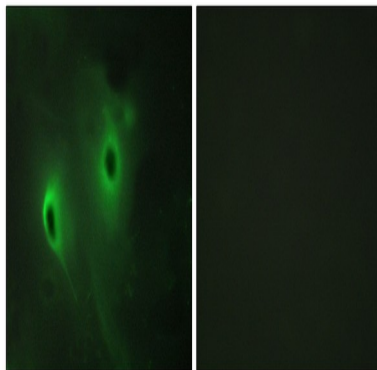
Background

The protein encoded by this gene is a member of the dual specificity protein phosphatase subfamily. These phosphatases inactivate their target kinases by dephosphorylating both the phosphoserine/threonine and phosphotyrosine residues. They negatively regulate members of the mitogen-activated protein (MAP) kinase superfamily (MAPK/ERK, SAPK/JNK, p38), which is associated with cellular proliferation and differentiation. Different members of the family of dual specificity phosphatases show distinct substrate specificities for various MAP kinases, different tissue distribution and subcellular localization, and different modes of inducibility of their expression by extracellular stimuli. This gene product shows selectivity for members of the ERK family of MAP kinases and is localized to the cytoplasm and nucleus. Aberrant expression of this gene is associated with type 2 diabetes and cancer. **progrcatalytic activity:** A phosphoprotein + H₂O = a protein + phosphate., **catalytic activity:** Protein tyrosine phosphate + H₂O = protein tyrosine + phosphate., **function:** Inactivates MAP kinases. Has a specificity for the ERK family., **similarity:** Belongs to the protein-tyrosine phosphatase family. Non-receptor class dual specificity subfamily., **similarity:** Contains 1 rhodanese domain., **similarity:** Contains 1 tyrosine-protein phosphatase domain.,

Research Area

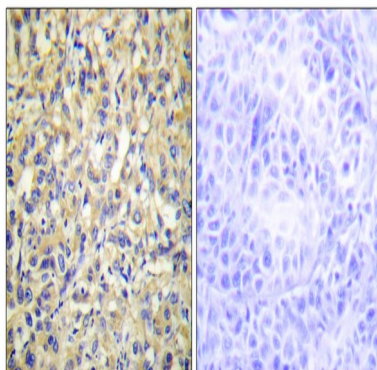
MAPK_ERK_Growth; MAPK_G_Protein;

Image Data

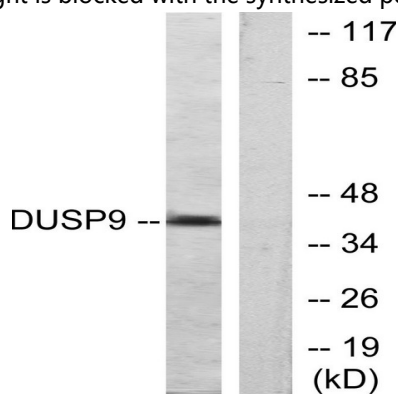


Immunofluorescence analysis of HeLa cells, using DUSP9 Antibody. The picture on the right is blocked with the synthesized peptide.

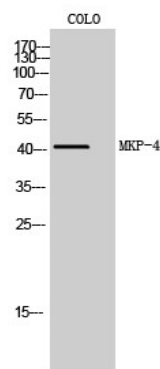
Product Name: MKP-4 Rabbit Polyclonal Antibody
Catalog #: APRab13935



Immunohistochemistry analysis of paraffin-embedded human liver carcinoma tissue, using DUSP9 Antibody. The picture on the right is blocked with the synthesized peptide.



Western blot analysis of lysates from HeLa cells, using DUSP9 Antibody. The lane on the right is blocked with the synthesized peptide.



Western Blot analysis of COLO cells using MKP-4 Polyclonal Antibody diluted at 1: 1000

Note

For research use only.