

Summary

Production Name	MKP-3 Rabbit Polyclonal Antibody
Description	Rabbit Polyclonal Antibody
Host	Rabbit
Application	IF,IHC,WB,ELISA
Reactivity	Human,Mouse,Rat

Performance

Conjugation	Unconjugated
Modification	Unmodified
Isotype	IgG
Clonality	Polyclonal
Form	Liquid
Storage	Store at 4°C short term. Aliquot and store at -20°C long term. Avoid freeze/thaw cycles.
Buffer	Liquid in PBS containing 50% glycerol, 0.5% BSA and 0.02% New type preservative N.
Purification	Affinity purification

Immunogen

Gene Name	DUSP6
Alternative Names	DUSP6; MKP3; PYST1; Dual specificity protein phosphatase 6; Dual specificity protein phosphatase PYST1; Mitogen-activated protein kinase phosphatase 3; MAP kinase phosphatase 3; MKP-3
Gene ID	1848.0
SwissProt ID	Q16828.The antiserum was produced against synthesized peptide derived from human DUSP6. AA range:61-110

Application

Dilution Ratio	WB 1:500 - 1:2000. IHC 1:100 - 1:300. IF 1:200 - 1:1000. ELISA: 1:20000. Not yet tested in other applications.
-----------------------	--

Product Name: MKP-3 Rabbit Polyclonal Antibody
Catalog #: APRab13934



Molecular Weight 42kD

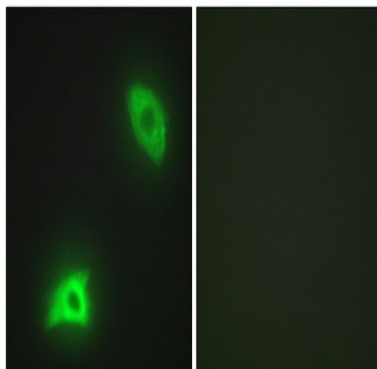
Background

The protein encoded by this gene is a member of the dual specificity protein phosphatase subfamily. These phosphatases inactivate their target kinases by dephosphorylating both the phosphoserine/threonine and phosphotyrosine residues. They negatively regulate members of the mitogen-activated protein (MAP) kinase superfamily (MAPK/ERK, SAPK/JNK, p38), which are associated with cellular proliferation and differentiation. Different members of the family of dual specificity phosphatases show distinct substrate specificities for various MAP kinases, different tissue distribution and subcellular localization, and different modes of inducibility of their expression by extracellular stimuli. This gene product inactivates ERK2, is expressed in a variety of tissues with the highest levels in heart and pancreas, and unlike most other members of this family, is localized in the cytoplasm. Mutations in catalytic activity: A phosphoprotein + H₂O = a protein + phosphate., catalytic activity: Protein tyrosine phosphate + H₂O = protein tyrosine + phosphate., function: Inactivates MAP kinases. Has a specificity for the ERK family., similarity: Belongs to the protein-tyrosine phosphatase family. Non-receptor class dual specificity subfamily., similarity: Contains 1 rhodanese domain., similarity: Contains 1 tyrosine-protein phosphatase domain.,

Research Area

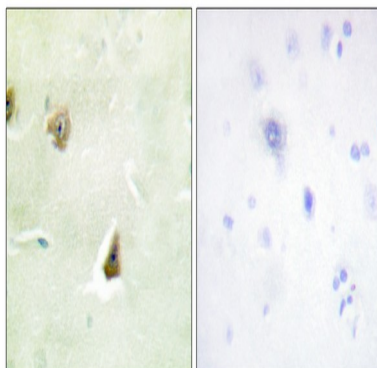
MAPK_ERK_Growth; MAPK_G_Protein;

Image Data

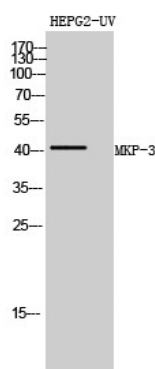


Immunofluorescence analysis of HeLa cells, using DUSP6 Antibody. The picture on the right is blocked with the synthesized peptide.

Product Name: MKP-3 Rabbit Polyclonal Antibody
Catalog #: APRab13934



Immunohistochemistry analysis of paraffin-embedded human brain tissue, using DUSP6 Antibody. The picture on the right is blocked with the synthesized peptide.



Western Blot analysis of HEPG2-UV cells using MKP-3 Polyclonal Antibody diluted at 1 : 500

Note

For research use only.