

## Summary

<b>Production Name</b>	MK Rabbit Polyclonal Antibody
<b>Description</b>	Rabbit Polyclonal Antibody
<b>Host</b>	Rabbit
<b>Application</b>	WB,IHC,IF,ELISA
<b>Reactivity</b>	Human,Rat

## Performance

<b>Conjugation</b>	Unconjugated
<b>Modification</b>	Unmodified
<b>Isotype</b>	IgG
<b>Clonality</b>	Polyclonal
<b>Form</b>	Liquid
<b>Storage</b>	Store at 4°C short term. Aliquot and store at -20°C long term. Avoid freeze/thaw cycles.
<b>Buffer</b>	Liquid in PBS containing 50% glycerol, 0.5% BSA and 0.02% New type preservative N.
<b>Purification</b>	Affinity purification

## Immunogen

<b>Gene Name</b>	MDK
<b>Alternative Names</b>	MDK; MK1; NEGF2; Midkine; MK; Amphiregulin-associated protein; ARAP; Midgestation and kidney protein; Neurite outgrowth-promoting factor 2; Neurite outgrowth-promoting protein
<b>Gene ID</b>	4192.0
<b>SwissProt ID</b>	P21741.The antiserum was produced against synthesized peptide derived from the Internal region of human MDK. AA range:94-143

## Application

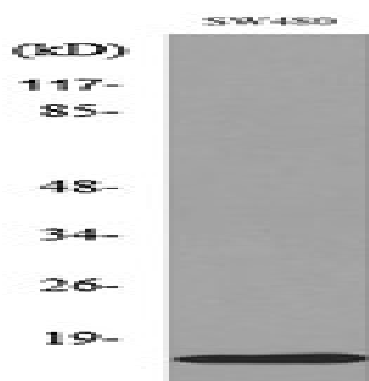
<b>Dilution Ratio</b>	WB 1:500 - 1:2000. IHC-p: 1:100-300 ELISA: 1:20000.. IF 1:50-200
<b>Molecular Weight</b>	18kD

## Background

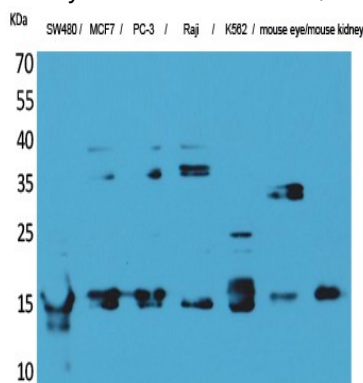
This gene encodes a member of a small family of secreted growth factors that binds heparin and responds to retinoic acid. The encoded protein promotes cell growth, migration, and angiogenesis, in particular during tumorigenesis. This gene has been targeted as a therapeutic for a variety of different disorders. Alternatively spliced transcript variants encoding multiple isoforms have been observed. [provided by RefSeq, Jul 2012],function:Has heparin binding activity, and growth promoting activity. Involved in neointima formation after arterial injury, possibly by mediating leukocyte recruitment. Also involved in early fetal adrenal gland development.,induction:By heparin and retinoic acid.,similarity:Belongs to the pleiotrophin family.,subunit:Homodimer.,

## Research Area

## Image Data



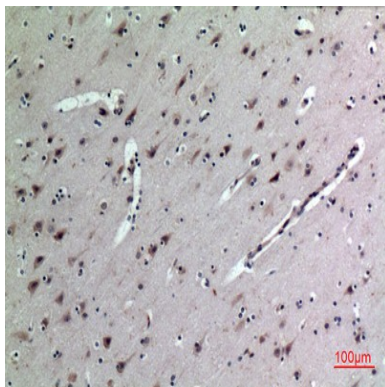
Western blot analysis of lysate from SW480 cells, using MDK Antibody.



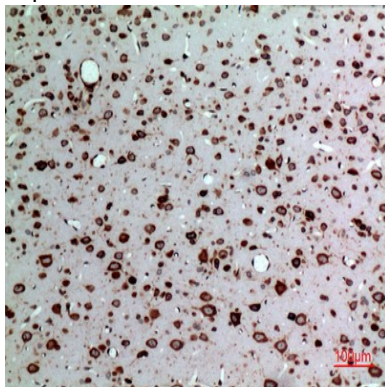
Western Blot analysis of SW480, MCF7, PC-3, Raji, K562, mouse eye, mouse kidney cells using MK Polyclonal Antibody..

Secondary antibody was diluted at 1:20000

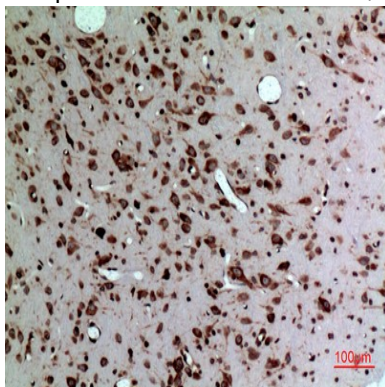
**Product Name: MK Rabbit Polyclonal Antibody**  
**Catalog #: APRab13923**



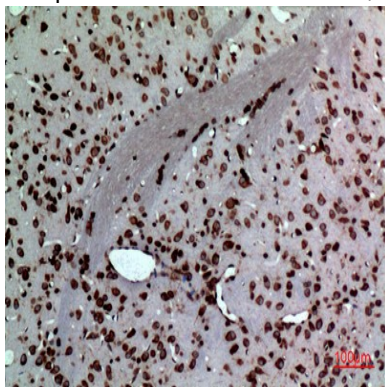
Immunohistochemical analysis of paraffin-embedded human-brain, antibody was diluted at 1:100



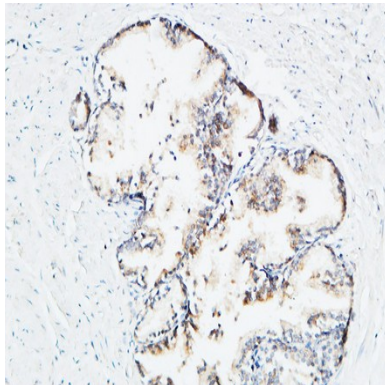
Immunohistochemical analysis of paraffin-embedded rat-brain, antibody was diluted at 1:100



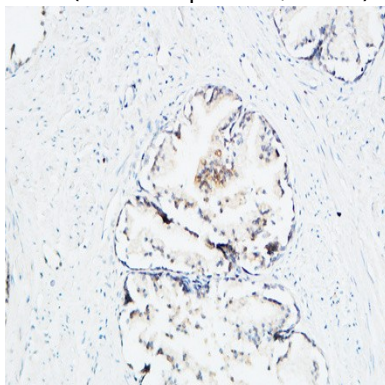
Immunohistochemical analysis of paraffin-embedded rat-brain, antibody was diluted at 1:100



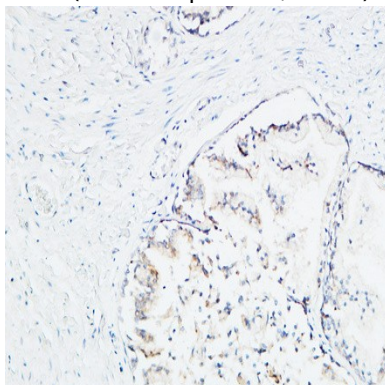
Immunohistochemical analysis of paraffin-embedded rat-brain, antibody was diluted at 1:100



Immunohistochemical analysis of paraffin-embedded Human Prostate. 1, Antibody was diluted at 1:100 (4°,overnight) . 2, High-pressure and temperature EDTA, pH8.0 was used for antigen retrieval. 3,Secondary antibody was diluted at 1:200 (room temperature, 30min) .



Immunohistochemical analysis of paraffin-embedded Human Prostate. 1, Antibody was diluted at 1:100 (4°,overnight) . 2, High-pressure and temperature EDTA, pH8.0 was used for antigen retrieval. 3,Secondary antibody was diluted at 1:200 (room temperature, 30min) .



Immunohistochemical analysis of paraffin-embedded Human Prostate. 1, Antibody was diluted at 1:100 (4°,overnight) . 2, High-pressure and temperature EDTA, pH8.0 was used for antigen retrieval. 3,Secondary antibody was diluted at 1:200 (room temperature, 30min) .

**Product Name: MK Rabbit Polyclonal Antibody**  
**Catalog #: APRab13923**

---



**Note**

For research use only.