

Product Name: MIP-T3 Rabbit Polyclonal Antibody
Catalog #: APRab13914



Summary

Production Name	MIP-T3 Rabbit Polyclonal Antibody
Description	Rabbit Polyclonal Antibody
Host	Rabbit
Application	IF,ELISA
Reactivity	Human,Rat,Mouse

Performance

Conjugation	Unconjugated
Modification	Unmodified
Isotype	IgG
Clonality	Polyclonal
Form	Liquid
Storage	Store at 4°C short term. Aliquot and store at -20°C long term. Avoid freeze/thaw cycles.
Buffer	Liquid in PBS containing 50% glycerol, 0.5% BSA and 0.02% New type preservative N.
Purification	Affinity purification

Immunogen

Gene Name	TRAF3IP1
Alternative Names	TRAF3IP1; MIPT3; TRAF3-interacting protein 1; Interleukin-13 receptor alpha 1-binding protein 1; Microtubule-interacting protein associated with TRAF3; MIP-T3
Gene ID	26146.0
SwissProt ID	Q8TDR0.The antiserum was produced against synthesized peptide derived from human MIPT3. AA range:221-270

Application

Dilution Ratio	IF 1:200-1:1000. ELISA: 1:20000.
Molecular Weight	78kD

Background

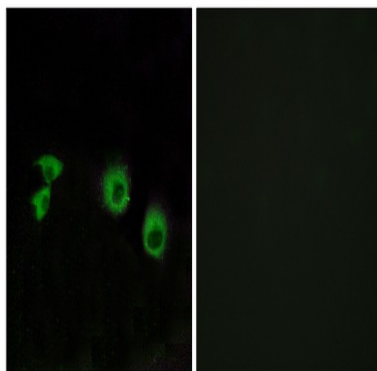
Product Name: MIP-T3 Rabbit Polyclonal Antibody
Catalog #: APRab13914



function: Play an inhibitory role on IL13 signaling by binding to IL13RA1. Involved in suppression of IL13-induced STAT6 phosphorylation, transcriptional activity and DNA-binding. Recruits TRAF3 and DISC1 to the microtubules., similarity: Belongs to the TRAF3IP1 family., subcellular location: Microtubules., subunit: Interacts with IL13RA1. Binds to microtubules, TRAF3 and DISC1., tissue specificity: Ubiquitous., function: Play an inhibitory role on IL13 signaling by binding to IL13RA1. Involved in suppression of IL13-induced STAT6 phosphorylation, transcriptional activity and DNA-binding. Recruits TRAF3 and DISC1 to the microtubules., similarity: Belongs to the TRAF3IP1 family., subcellular location: Microtubules., subunit: Interacts with IL13RA1. Binds to microtubules, TRAF3 and DISC1., tissue specificity: Ubiquitous.,

Research Area

Image Data



Immunofluorescence analysis of MCF7 cells, using MIPT3 Antibody. The picture on the right is blocked with the synthesized peptide.

Note

For research use only.