

## Summary

<b>Production Name</b>	MINK1 Rabbit Polyclonal Antibody
<b>Description</b>	Rabbit Polyclonal Antibody
<b>Host</b>	Rabbit
<b>Application</b>	WB,IHC,ELISA
<b>Reactivity</b>	Human,Mouse

## Performance

<b>Conjugation</b>	Unconjugated
<b>Modification</b>	Unmodified
<b>Isotype</b>	IgG
<b>Clonality</b>	Polyclonal
<b>Form</b>	Liquid
<b>Storage</b>	Store at 4°C short term. Aliquot and store at -20°C long term. Avoid freeze/thaw cycles.
<b>Buffer</b>	Liquid in PBS containing 50% glycerol, 0.5% BSA and 0.02% New type preservative N.
<b>Purification</b>	Affinity purification

## Immunogen

<b>Gene Name</b>	MINK1 MINK1; B55; MAP4K6; MINK; YSK2; ZC3; Misshapen-like kinase 1; GCK family kinase
<b>Alternative Names</b>	MiNK; MAPK/ERK kinase kinase kinase 6; MEK kinase kinase 6; MEKKK 6; Misshapen/NIK-related kinase; Mitogen-activated protein kinase kinase kinase kinase 6
<b>Gene ID</b>	50488.0
<b>SwissProt ID</b>	Q8N4C8.The antiserum was produced against synthesized peptide derived from human MAP4K6. AA range:401-450

## Application

<b>Dilution Ratio</b>	WB 1:500 - 1:2000. IHC 1:100 - 1:300. ELISA: 1:20000..
<b>Molecular Weight</b>	150kD

**Product Name: MINK1 Rabbit Polyclonal Antibody**  
**Catalog #: AP Rab13906**

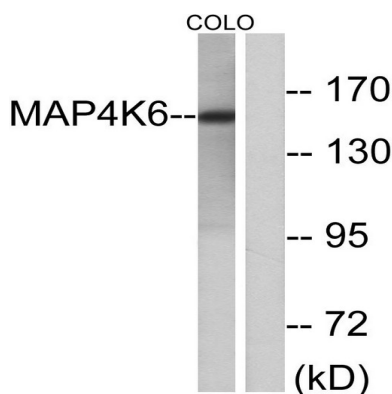


## Background

This gene encodes a serine/threonine kinase belonging to the germinal center kinase (GCK) family. The protein is structurally similar to the kinases that are related to NIK and may belong to a distinct subfamily of NIK-related kinases within the GCK family. Studies of the mouse homolog indicate an up-regulation of expression in the course of postnatal mouse cerebral development and activation of the cJun N-terminal kinase (JNK) and the p38 pathways. [provided by RefSeq, Mar 2016], catalytic activity: ATP + a protein = ADP + a phosphoprotein., cofactor: Magnesium., function: Serine/threonine kinase that may play a role in the response to environmental stress. Appears to act upstream of the JUN N-terminal pathway. May play a role in the development of the brain., similarity: Belongs to the protein kinase superfamily., similarity: Belongs to the protein kinase superfamily. STE Ser/Thr protein kinase family. STE20 subfamily., similarity: Contains 1 CNH domain., similarity: Contains 1 protein kinase domain., tissue specificity: Expressed in the brain, isoform 2 is more abundant than isoform 1.,

## Research Area

## Image Data



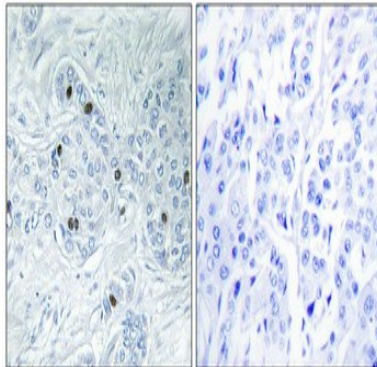
Western blot analysis of lysates from COLO cells, using MAP4K6 Antibody. The lane on the right is blocked with the synthesized peptide.



**Product Name: MINK1 Rabbit Polyclonal Antibody**  
**Catalog #: APRab13906**



Western Blot analysis of various cells using MINK1 Polyclonal Antibody diluted at 1: 1000



Immunohistochemical analysis of paraffin-embedded Human breast cancer. Antibody was diluted at 1:100 (4°,overnight) .

High-pressure and temperature Tris-EDTA,pH8.0 was used for antigen retrieval. Negative contrl (right) obtained from antibody was pre-absorbed by immunogen peptide.

## **Note**

For research use only.