

Product Name: Mindin Rabbit Polyclonal Antibody
Catalog #: APRab13905



Summary

Production Name	Mindin Rabbit Polyclonal Antibody
Description	Rabbit Polyclonal Antibody
Host	Rabbit
Application	WB
Reactivity	Human,Mouse,Rat,Monkey

Performance

Conjugation	Unconjugated
Modification	Unmodified
Isotype	IgG
Clonality	Polyclonal
Form	Liquid
Storage	Store at 4°C short term. Aliquot and store at -20°C long term. Avoid freeze/thaw cycles.
Buffer	Liquid in PBS containing 50% glycerol, 0.5% BSA and 0.02% New type preservative N.
Purification	Affinity purification

Immunogen

Gene Name	SPON2
Alternative Names	SPON2; DIL1; Spondin-2; Differentially expressed in cancerous and non-cancerous lung cells 1; DIL-1; Mindin
Gene ID	10417.0
SwissProt ID	Q9BUD6.The antiserum was produced against synthesized peptide derived from human SPON2. AA range:71-120

Application

Dilution Ratio	WB 1:500-2000
Molecular Weight	37kD

Product Name: Mindin Rabbit Polyclonal Antibody
Catalog #: AP Rab13905

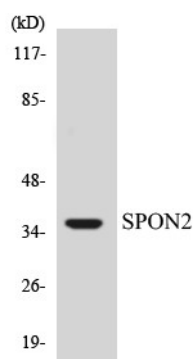


Background

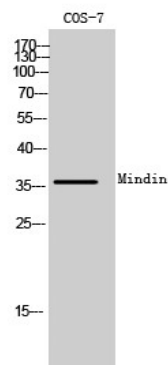
function: Cell adhesion protein that promotes adhesion and outgrowth of hippocampal embryonic neurons. Binds directly to bacteria and their components and functions as an opsonin for macrophage phagocytosis of bacteria. Essential in the initiation of the innate immune response and represents a unique pattern-recognition molecule in the ECM for microbial pathogens., similarity: Contains 1 spondin domain., similarity: Contains 1 TSP type-1 domain., tissue specificity: Expressed in normal lung tissues but not in lung carcinoma cell lines., function: Cell adhesion protein that promotes adhesion and outgrowth of hippocampal embryonic neurons. Binds directly to bacteria and their components and functions as an opsonin for macrophage phagocytosis of bacteria. Essential in the initiation of the innate immune response and represents a unique pattern-recognition molecule in the ECM for microbial pathogens., similarity: Contains 1 spondin domain., similarity: Contains 1 TSP type-1 domain., tissue specificity: Expressed in normal lung tissues but not in lung carcinoma cell lines.,

Research Area

Image Data



Western blot analysis of the lysates from HUVEC cells using SPON2 antibody.



Western Blot analysis of COS-7 cells using Mindin Polyclonal Antibody

Product Name: Mindin Rabbit Polyclonal Antibody
Catalog #: APRab13905



Note

For research use only.