

Summary

Production Name	mGluR5 Rabbit Polyclonal Antibody
Description	Rabbit Polyclonal Antibody
Host	Rabbit
Application	IF, WB, ELISA
Reactivity	Human, Mouse, Rat

Performance

Conjugation	Unconjugated
Modification	Unmodified
Isotype	IgG
Clonality	Polyclonal
Form	Liquid
Storage	Store at 4°C short term. Aliquot and store at -20°C long term. Avoid freeze/thaw cycles.
Buffer	Liquid in PBS containing 50% glycerol, 0.5% BSA and 0.02% New type preservative N.
Purification	Affinity purification

Immunogen

Gene Name	GRM5
Alternative Names	GRM5; GPRC1E; MGLUR5; Metabotropic glutamate receptor 5; mGluR5
Gene ID	2915.0
SwissProt ID	P41594. The antiserum was produced against synthesized peptide derived from human GRM5. AA range: 21-70

Application

Dilution Ratio	WB 1:500 - 1:2000. IF 1:200 - 1:1000. ELISA: 1:10000. Not yet tested in other applications.
Molecular Weight	130kD

Product Name: mGluR5 Rabbit Polyclonal Antibody
Catalog #: AP Rab13862



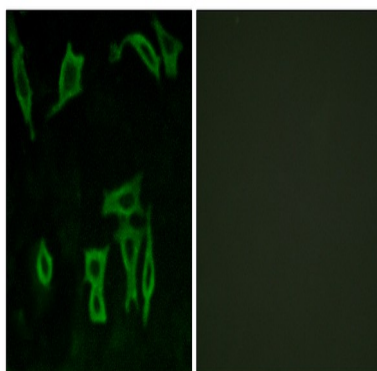
Background

glutamate metabotropic receptor 5 (GRM5) Homo sapiens This gene encodes a member of the G-protein coupled receptor 3 protein family. The encoded protein is a metabotropic glutamate receptor, whose signaling activates a phosphatidylinositol-calcium second messenger system. This protein may be involved in the regulation of neural network activity and synaptic plasticity. Glutamatergic neurotransmission is involved in most aspects of normal brain function and can be perturbed in many neuropathologic conditions. A pseudogene of this gene has been defined on chromosome 11. Alternative splicing results in multiple transcript variants. [provided by RefSeq, May 2014], function: Receptor for glutamate. The activity of this receptor is mediated by a G-protein that activates a phosphatidylinositol-calcium second messenger system and generates a calcium-activated chloride current., similarity: Belongs to the G-protein coupled receptor 3 family., subunit: The PPXXF motif binds HOMER1, HOMER2 and HOMER3. Interacts with SIAH1, RYR1, RYR2, ITPR1, SHANK1, SHANK3 and GRASP.,

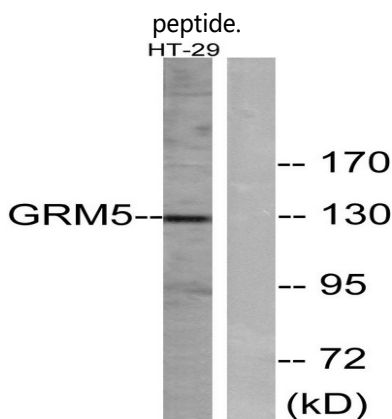
Research Area

Calcium; Neuroactive ligand-receptor interaction; Gap junction; Long-term potentiation; Long-term depression; Huntington's disease;

Image Data

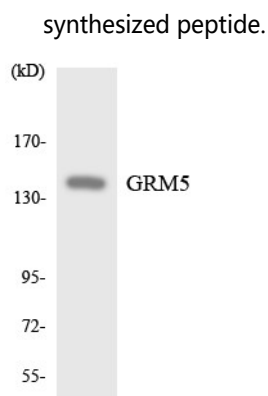


Immunofluorescence analysis of LOVO cells, using GRM5 Antibody. The picture on the right is blocked with the synthesized

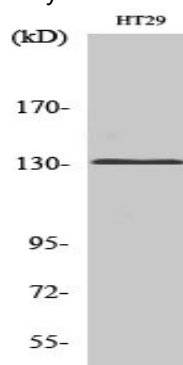


Western blot analysis of lysates from HT-29 cells, using GRM5 Antibody. The lane on the right is blocked with the

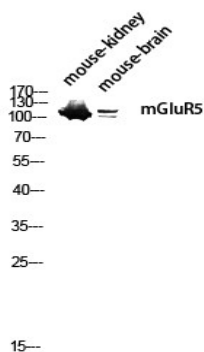
Product Name: mGluR5 Rabbit Polyclonal Antibody
Catalog #: APRab13862



Western blot analysis of the lysates from HeLa cells using GRM5 antibody.



Western Blot analysis of various cells using mGluR5 Polyclonal Antibody diluted at 1: 1000



Western blot analysis of mouse-kidney mouse-brain lysis using mGluR5 antibody. Antibody was diluted at 1:1000

Note

For research use only.