

Product Name: MerTK/Tyro3 Rabbit Polyclonal Antibody
Catalog #: APRab13826

Summary

Production Name	MerTK/Tyro3 Rabbit Polyclonal Antibody
Description	Rabbit Polyclonal Antibody
Host	Rabbit
Application	IHC, WB, ELISA
Reactivity	Human, Mouse, Rat

Performance

Conjugation	Unconjugated
Modification	Unmodified
Isotype	IgG
Clonality	Polyclonal
Form	Liquid
Storage	Store at 4°C short term. Aliquot and store at -20°C long term. Avoid freeze/thaw cycles.
Buffer	Liquid in PBS containing 50% glycerol, 0.5% BSA and 0.02% New type preservative N.
Purification	Affinity purification

Immunogen

Gene Name	MERTK/TYRO3
Alternative Names	MERTK; MER; Tyrosine-protein kinase Mer; Proto-oncogene c-Mer; Receptor tyrosine kinase MerTK; TYRO3; BYK; DTK; RSE; SKY; Tyrosine-protein kinase receptor TYRO3; Tyrosine-protein kinase DTK; Tyrosine-protein kinase RSE; Tyrosine-protein kin
Gene ID	10461/7301
SwissProt ID	Q12866/Q06418. The antiserum was produced against synthesized peptide derived from human MER/SKY. AA range: 716-765

Application

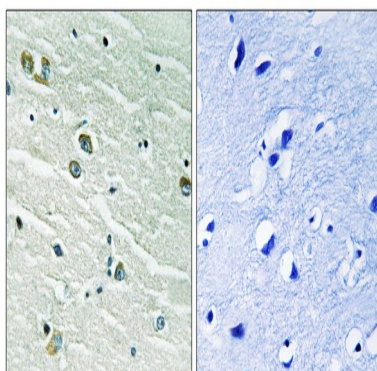
Dilution Ratio	WB 1:500 - 1:2000. IHC 1:100 - 1:300. ELISA: 1:20000..
Molecular Weight	97kD

Background

This gene is a member of the MER/AXL/TYRO3 receptor kinase family and encodes a transmembrane protein with two fibronectin type-III domains, two Ig-like C2-type (immunoglobulin-like) domains, and one tyrosine kinase domain. Mutations in this gene have been associated with disruption of the retinal pigment epithelium (RPE) phagocytosis pathway and onset of autosomal recessive retinitis pigmentosa (RP). [provided by RefSeq, Jul 2008], catalytic activity: ATP + a [protein]-L-tyrosine = ADP + a [protein]-L-tyrosine phosphate, disease: Defects in MERTK are a cause of retinitis pigmentosa (RP) [MIM:268000]. RP that leads to degeneration of retinal photoreceptor cells. Patients typically have night vision blindness and loss of midperipheral visual field. As their condition progresses, they lose their far peripheral visual field and eventually central vision as well., function: In case of filovirus infection, seems to function as a cell entry factor., online information: Retina International's Scientific Newsletter, similarity: Belongs to the protein kinase superfamily. Tyr protein kinase family., similarity: Belongs to the protein kinase superfamily. Tyr protein kinase family. AXL/UFO subfamily., similarity: Contains 1 protein kinase domain., similarity: Contains 2 fibronectin type-III domains., similarity: Contains 2 Ig-like C2-type (immunoglobulin-like) domains., tissue specificity: Not expressed in normal B- and T-lymphocytes but is expressed in numerous neoplastic B- and T-cell lines.,

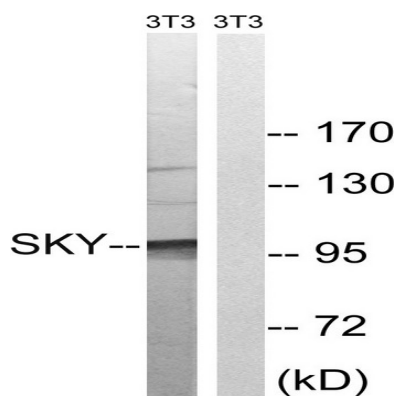
Research Area

Image Data

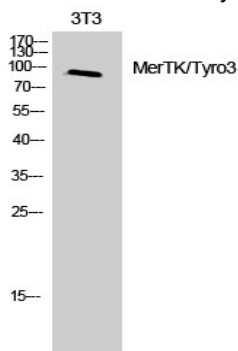


Immunohistochemistry analysis of paraffin-embedded human brain tissue, using MER/SKY Antibody. The picture on the right is blocked with the synthesized peptide.

Product Name: MerTK/Tyro3 Rabbit Polyclonal Antibody
Catalog #: APRab13826



Western blot analysis of lysates from NIH/3T3 cells, treated with EGF 200ng/ml 5', using MER/SKY Antibody. The lane on the right is blocked with the synthesized peptide.



Western Blot analysis of 3T3 cells using MerTK/Tyro3 Polyclonal Antibody

Note

For research use only.