

Product Name: MCT14 Rabbit Polyclonal Antibody
Catalog #: APRab13741



Summary

Production Name	MCT14 Rabbit Polyclonal Antibody
Description	Rabbit Polyclonal Antibody
Host	Rabbit
Application	WB,ELISA
Reactivity	Human,Mouse

Performance

Conjugation	Unconjugated
Modification	Unmodified
Isotype	IgG
Clonality	Polyclonal
Form	Liquid
Storage	Store at 4°C short term. Aliquot and store at -20°C long term. Avoid freeze/thaw cycles.
Buffer	Liquid in PBS containing 50% glycerol, 0.5% BSA and 0.02% New type preservative N.
Purification	Affinity purification

Immunogen

Gene Name	SLC16A14
Alternative Names	SLC16A14; MCT14; Monocarboxylate transporter 14; MCT 14; Solute carrier family 16 member 14
Gene ID	151473.0
SwissProt ID	Q7RTX9.The antiserum was produced against synthesized peptide derived from human MOT14. AA range:131-180

Application

Dilution Ratio	WB 1:500 - 1:2000. ELISA: 1:10000
Molecular Weight	48kD

Product Name: MCT14 Rabbit Polyclonal Antibody
Catalog #: APRab13741

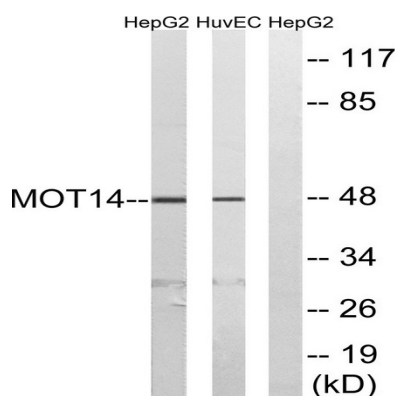


Background

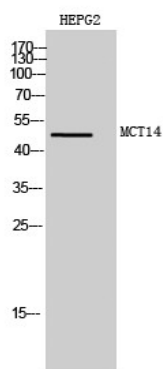
function: Proton-linked monocarboxylate transporter. Catalyzes the rapid transport across the plasma membrane of many monocarboxylates., similarity: Belongs to the major facilitator superfamily. Monocarboxylate porter (TC 2.A.1.13) family., function: Proton-linked monocarboxylate transporter. Catalyzes the rapid transport across the plasma membrane of many monocarboxylates., similarity: Belongs to the major facilitator superfamily. Monocarboxylate porter (TC 2.A.1.13) family.,

Research Area

Image Data



Western blot analysis of lysates from HUVEC and HepG2 cells, using MOT14 Antibody. The lane on the right is blocked with the synthesized peptide.



Western Blot analysis of HEPG2 cells using MCT14 Polyclonal Antibody diluted at 1: 1000

Note

For research use only.