

Product Name: M-cadherin Rabbit Polyclonal Antibody
Catalog #: APRab13702



Summary

Production Name	M-cadherin Rabbit Polyclonal Antibody
Description	Rabbit Polyclonal Antibody
Host	Rabbit
Application	WB,ELISA
Reactivity	Human,Mouse,Rat

Performance

Conjugation	Unconjugated
Modification	Unmodified
Isotype	IgG
Clonality	Polyclonal
Form	Liquid
Storage	Store at 4°C short term. Aliquot and store at -20°C long term. Avoid freeze/thaw cycles.
Buffer	Liquid in PBS containing 50% glycerol, 0.5% BSA and 0.02% New type preservative N.
Purification	Affinity purification

Immunogen

Gene Name	CDH15
Alternative Names	CDH15; CDH14; CDH3; Cadherin-15; Cadherin-14; Muscle cadherin; M-cadherin
Gene ID	1013.0
SwissProt ID	P55291.The antiserum was produced against synthesized peptide derived from human CDH15. AA range:81-130

Application

Dilution Ratio	WB 1:500 - 1:2000. ELISA: 1:10000
Molecular Weight	89kD

Background

Product Name: M-cadherin Rabbit Polyclonal Antibody
Catalog #: AP Rab13702

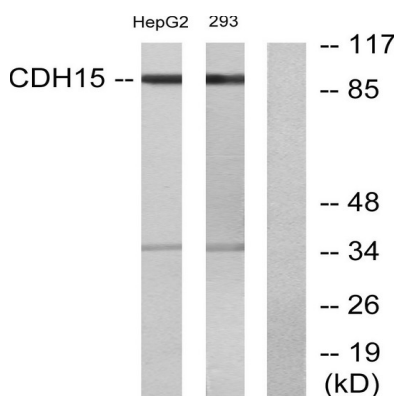


This gene is a member of the cadherin superfamily of genes, encoding calcium-dependent intercellular adhesion glycoproteins. Cadherins consist of an extracellular domain containing 5 cadherin domains, a transmembrane region, and a conserved cytoplasmic domain. Transcripts from this particular cadherin are expressed in myoblasts and upregulated in myotubule-forming cells. The protein is thought to be essential for the control of morphogenetic processes, specifically myogenesis, and may provide a trigger for terminal muscle cell differentiation. [provided by RefSeq, Jul 2008],disease:A chromosomal aberration involving CDH15 and KIRREL3 is found in a patient with severe mental retardation and dysmorphic facial features. Translocation t(11;16)(q24.2;q24),disease:Defects in CDH15 are the cause of mental retardation autosomal dominant type 3 (MRD3) [MIM:612580]. Mental retardation is characterized by significantly sub-average general intellectual functioning associated with impairments in adaptive behavior and manifested during the developmental period.,function:Cadherins are calcium dependent cell adhesion proteins. They preferentially interact with themselves in a homophilic manner in connecting cells; cadherins may thus contribute to the sorting of heterogeneous cell types. M-cadherin is part of the myogenic program and may provide a trigger for terminal muscle differentiation.,similarity:Contains 5 cadherin domains.,tissue specificity:Expressed in the brain and cerebellum.,

Research Area

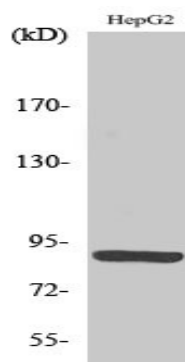
Cell adhesion molecules (CAMs);

Image Data



Western blot analysis of lysates from HepG2 and 293 cells, using CDH15 Antibody. The lane on the right is blocked with the synthesized peptide.

Product Name: M-cadherin Rabbit Polyclonal Antibody
Catalog #: APRab13702



Western Blot analysis of various cells using M-cadherin Polyclonal Antibody diluted at 1: 500

Note

For research use only.