

Product Name: MAST3 Rabbit Polyclonal Antibody
Catalog #: APRab13662



Summary

Production Name	MAST3 Rabbit Polyclonal Antibody
Description	Rabbit Polyclonal Antibody
Host	Rabbit
Application	WB,ELISA
Reactivity	Human,Mouse

Performance

Conjugation	Unconjugated
Modification	Unmodified
Isotype	IgG
Clonality	Polyclonal
Form	Liquid
Storage	Store at 4°C short term. Aliquot and store at -20°C long term. Avoid freeze/thaw cycles.
Buffer	Liquid in PBS containing 50% glycerol, 0.5% BSA and 0.02% New type preservative N.
Purification	Affinity purification

Immunogen

Gene Name	MAST3
Alternative Names	MAST3; KIAA0561; Microtubule-associated serine/threonine-protein kinase 3
Gene ID	23031.0
SwissProt ID	O60307.The antiserum was produced against synthesized peptide derived from human MAST3. AA range:1031-1080

Application

Dilution Ratio	WB 1:500 - 1:2000. ELISA: 1:10000
Molecular Weight	143kD

Background

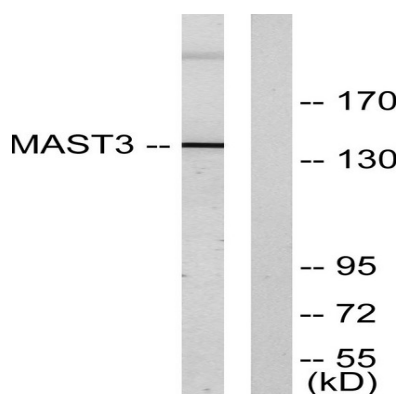
Product Name: MAST3 Rabbit Polyclonal Antibody
Catalog #: AP Rab13662



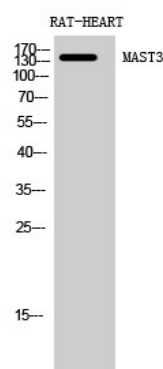
catalytic activity:ATP + a protein = ADP + a phosphoprotein.,caution:It is uncertain whether Met-1, Met-171 or Met-172 is the initiator.,cofactor:Magnesium.,similarity:Belongs to the protein kinase superfamily. AGC Ser/Thr protein kinase family.,similarity:Contains 1 AGC-kinase C-terminal domain.,similarity:Contains 1 PDZ (DHR) domain.,similarity:Contains 1 protein kinase domain.,subunit:Interacts with PTEN.,catalytic activity:ATP + a protein = ADP + a phosphoprotein.,caution:It is uncertain whether Met-1, Met-171 or Met-172 is the initiator.,cofactor:Magnesium.,similarity:Belongs to the protein kinase superfamily. AGC Ser/Thr protein kinase family.,similarity:Contains 1 AGC-kinase C-terminal domain.,similarity:Contains 1 PDZ (DHR) domain.,similarity:Contains 1 protein kinase domain.,subunit:Interacts with PTEN.,

Research Area

Image Data



Western blot analysis of lysates from Jurkat cells, using MAST3 Antibody. The lane on the right is blocked with the synthesized peptide.



Western Blot analysis of RAT-HEART cells using MAST3 Polyclonal Antibody diluted at 1: 500

Note

For research use only.