

Summary

Production Name	Maspin Rabbit Polyclonal Antibody
Description	Rabbit Polyclonal Antibody
Host	Rabbit
Application	WB,ELISA
Reactivity	Human,Mouse,Rat

Performance

Conjugation	Unconjugated
Modification	Unmodified
Isotype	IgG
Clonality	Polyclonal
Form	Liquid
Storage	Store at 4°C short term. Aliquot and store at -20°C long term. Avoid freeze/thaw cycles.
Buffer	Liquid in PBS containing 50% glycerol, 0.5% BSA and 0.02% New type preservative N.
Purification	Affinity purification

Immunogen

Gene Name	SERPINB5
Alternative Names	SERPINB5; PI5; Serpin B5; Maspin; Peptidase inhibitor 5; PI-5
Gene ID	5268.0
SwissProt ID	P36952.The antiserum was produced against synthesized peptide derived from human Serpin B5. AA range:91-140

Application

Dilution Ratio	WB 1:500 - 1:2000. ELISA: 1:20000. Not yet tested in other applications.
Molecular Weight	40kD

Background

Product Name: Maspin Rabbit Polyclonal Antibody
Catalog #: APRab13656

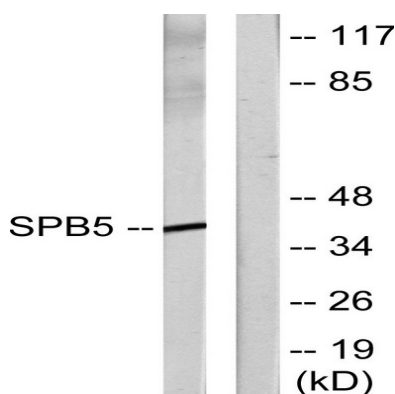


function:Tumor suppressor. It blocks the growth, invasion, and metastatic properties of mammary tumors. As it does not undergo the S (stressed) to R (relaxed) conformational transition characteristic of active serpins, it exhibits no serine protease inhibitory activity.,similarity:Belongs to the serpin family. Ov-serpin subfamily.,tissue specificity:Normal mammary epithelial cells.,function:Tumor suppressor. It blocks the growth, invasion, and metastatic properties of mammary tumors. As it does not undergo the S (stressed) to R (relaxed) conformational transition characteristic of active serpins, it exhibits no serine protease inhibitory activity.,similarity:Belongs to the serpin family. Ov-serpin subfamily.,tissue specificity:Normal mammary epithelial cells.,

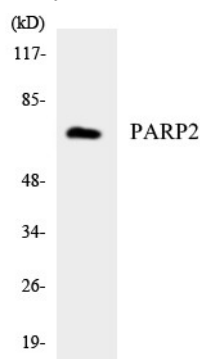
Research Area

p53;

Image Data

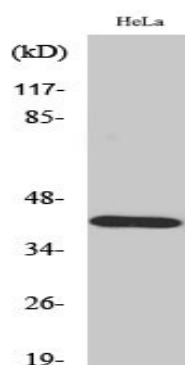


Western blot analysis of lysates from HeLa cells, using Serpin B5 Antibody. The lane on the right is blocked with the synthesized peptide.



Western blot analysis of the lysates from HeLa cells using PARP2 antibody.

Product Name: Maspin Rabbit Polyclonal Antibody
Catalog #: APRab13656



Western Blot analysis of various cells using Maspin Polyclonal Antibody

Note

For research use only.