

Product Name: MARK1/2/3/4 Rabbit Polyclonal Antibody
Catalog #: APRab13648

Summary

Production Name	MARK1/2/3/4 Rabbit Polyclonal Antibody
Description	Rabbit Polyclonal Antibody
Host	Rabbit
Application	IF,IHC,WB,
Reactivity	Human,Mouse,Rat,Monkey

Performance

Conjugation	Unconjugated
Modification	Unmodified
Isotype	IgG
Clonality	Polyclonal
Form	Liquid
Storage	Store at 4°C short term. Aliquot and store at -20°C long term. Avoid freeze/thaw cycles.
Buffer	Liquid in PBS containing 50% glycerol, 0.5% BSA and 0.02% New type preservative N.
Purification	Affinity purification

Immunogen

Gene Name	MARK1/2/3/4 MARK1; KIAA1477; MARK; Serine/threonine-protein kinase MARK1; MAP/microtubule affinity-regulating kinase 1; PAR1 homolog c; Par-1c; Par1c; MARK2; EMK1; Serine/threonine-protein kinase MARK2; ELKL motif kinase 1; EMK-1; MAP/microtubule affin
Alternative Names	
Gene ID	4139/2011/4140/57787
SwissProt ID	Q9P0L2/Q7KZI7/P27448/Q96L34.The antiserum was produced against synthesized peptide derived from human MARK1/2/3/4. AA range:181-230

Application

Dilution Ratio	WB 1:500 - 1:2000 IHC 1:100 - 1:300. IF 1:200 - 1:1000. ELISA: 1:10000. Not yet tested
-----------------------	----------------------------------------------------------------------------------------

Product Name: MARK1/2/3/4 Rabbit Polyclonal Antibody
Catalog #: AP Rab13648

in other applications.

Molecular Weight 89kD

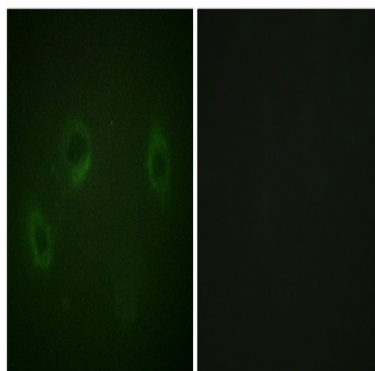
Background

catalytic activity:ATP + a protein = ADP + a phosphoprotein.,cofactor:Magnesium.,enzyme regulation:Activated by phosphorylation on Thr-215 by STK11 in complex with STE20-related adapter-alpha (STRAD alpha) pseudo kinase and CAB39.,function:May play a role in cytoskeletal stability.,similarity:Belongs to the protein kinase superfamily. CAMK Ser/Thr protein kinase family. MARK subfamily.,similarity:Contains 1 KA1 (kinase-associated) domain.,similarity:Contains 1 protein kinase domain.,similarity:Contains 1 UBA domain.,subcellular location:Appears to localize to an intracellular network.,tissue specificity:Highly expressed in heart, skeletal muscle, brain, fetal brain and fetal kidney.,catalytic activity:ATP + a protein = ADP + a phosphoprotein.,cofactor:Magnesium.,enzyme regulation:Activated by phosphorylation on Thr-215 by STK11 in complex with STE20-related adapter-alpha (STRAD alpha) pseudo kinase and CAB39.,function:May play a role in cytoskeletal stability.,similarity:Belongs to the protein kinase superfamily. CAMK Ser/Thr protein kinase family. MARK subfamily.,similarity:Contains 1 KA1 (kinase-associated) domain.,similarity:Contains 1 protein kinase domain.,similarity:Contains 1 UBA domain.,subcellular location:Appears to localize to an intracellular network.,tissue specificity:Highly expressed in heart, skeletal muscle, brain, fetal brain and fetal kidney.,

Research Area

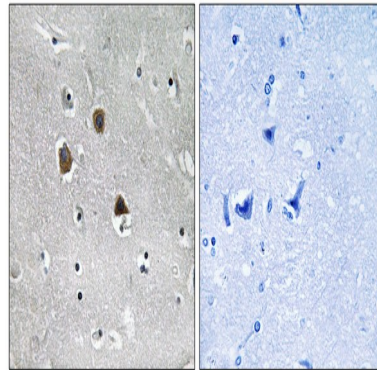
Regulation of Microtubule Dynamics

Image Data

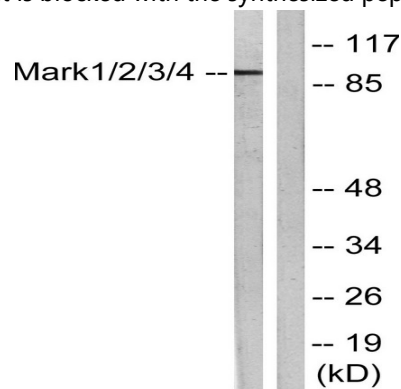


Immunofluorescence analysis of HeLa cells, using MARK1/2/3/4 Antibody. The picture on the right is blocked with the synthesized peptide.

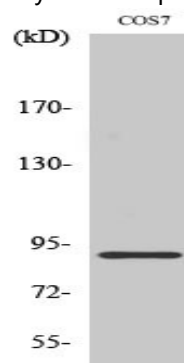
Product Name: MARK1/2/3/4 Rabbit Polyclonal Antibody
Catalog #: AP Rab13648



Immunohistochemistry analysis of paraffin-embedded human brain tissue, using MARK1/2/3/4 Antibody. The picture on the right is blocked with the synthesized peptide.



Western blot analysis of lysates from COS7 cells, using MARK1/2/3/4 Antibody. The lane on the right is blocked with the synthesized peptide.



Western Blot analysis of various cells using MARK1/2/3/4 Polyclonal Antibody

Note

For research use only.