

**Product Name: Mammaglobin A Rabbit Polyclonal Antibody**  
**Catalog #: APRab13614**



---

## Summary

<b>Production Name</b>	Mammaglobin A Rabbit Polyclonal Antibody
<b>Description</b>	Rabbit Polyclonal Antibody
<b>Host</b>	Rabbit
<b>Application</b>	IF,IHC,WB,ELISA
<b>Reactivity</b>	Human,Rat

## Performance

<b>Conjugation</b>	Unconjugated
<b>Modification</b>	Unmodified
<b>Isotype</b>	IgG
<b>Clonality</b>	Polyclonal
<b>Form</b>	Liquid
<b>Storage</b>	Store at 4°C short term. Aliquot and store at -20°C long term. Avoid freeze/thaw cycles.
<b>Buffer</b>	Liquid in PBS containing 50% glycerol, 0.5% BSA and 0.02% New type preservative N.
<b>Purification</b>	Affinity purification

## Immunogen

<b>Gene Name</b>	SCGB2A2
<b>Alternative Names</b>	SCGB2A2; MGB1; UGB2; Mammaglobin-A; Mammaglobin-1; Secretoglobin family 2A member 2
<b>Gene ID</b>	4250.0
<b>SwissProt ID</b>	Q13296.The antiserum was produced against synthesized peptide derived from human Mammaglobin. AA range:41-90

## Application

<b>Dilution Ratio</b>	WB 1:500 - 1:2000. IHC 1:100 - 1:300. IF 1:200 - 1:1000. ELISA: 1:5000. Not yet tested in other applications.
-----------------------	---

**Product Name: Mammaglobin A Rabbit Polyclonal Antibody**  
**Catalog #: APRab13614**

---

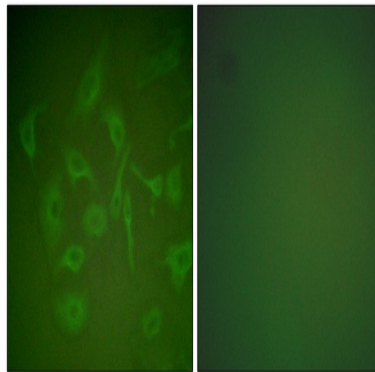
**Molecular Weight**      20kD

## Background

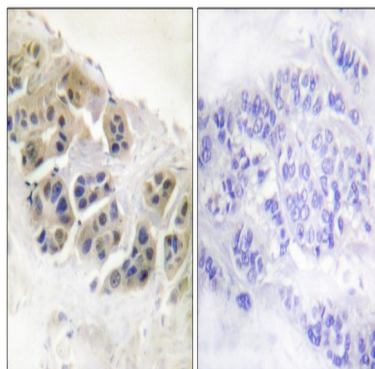
similarity:Belongs to the secretoglobin family. Lipophilin subfamily.,tissue specificity:Mammary gland specific. Over-expressed in breast cancer.,similarity:Belongs to the secretoglobin family. Lipophilin subfamily.,tissue specificity:Mammary gland specific. Over-expressed in breast cancer.,

## Research Area

## Image Data

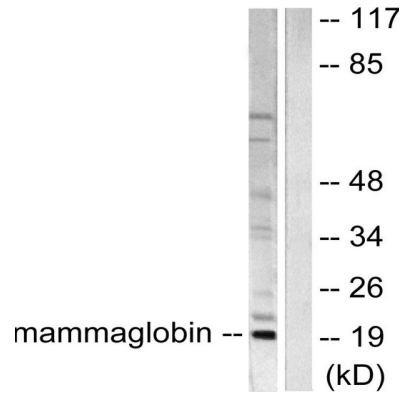


Immunofluorescence analysis of HepG2 cells, using Mammaglobin Antibody. The picture on the right is blocked with the synthesized peptide.



Immunohistochemistry analysis of paraffin-embedded human breast carcinoma tissue, using Mammaglobin Antibody. The picture on the right is blocked with the synthesized peptide.

**Product Name: Mammaglobin A Rabbit Polyclonal Antibody**  
**Catalog #: APRab13614**



Western blot analysis of lysates from HepG2 cells, using Mammaglobin Antibody. The lane on the right is blocked with the synthesized peptide.

**Note**

For research use only.