

Product Name: MAK Rabbit Polyclonal Antibody
Catalog #: APRab13602



Summary

Production Name	MAK Rabbit Polyclonal Antibody
Description	Rabbit Polyclonal Antibody
Host	Rabbit
Application	WB,ELISA
Reactivity	Human,Mouse,Rat

Performance

Conjugation	Unconjugated
Modification	Unmodified
Isotype	IgG
Clonality	Polyclonal
Form	Liquid
Storage	Store at 4°C short term. Aliquot and store at -20°C long term. Avoid freeze/thaw cycles.
Buffer	Liquid in PBS containing 50% glycerol, 0.5% BSA and 0.02% New type preservative N.
Purification	Affinity purification

Immunogen

Gene Name	MAK
Alternative Names	MAK; Serine/threonine-protein kinase MAK; Male germ cell-associated kinase
Gene ID	4117.0
SwissProt ID	P20794.The antiserum was produced against synthesized peptide derived from human MAK. AA range:126-175

Application

Dilution Ratio	WB 1:500 - 1:2000. ELISA: 1:40000.
Molecular Weight	71kD

Background

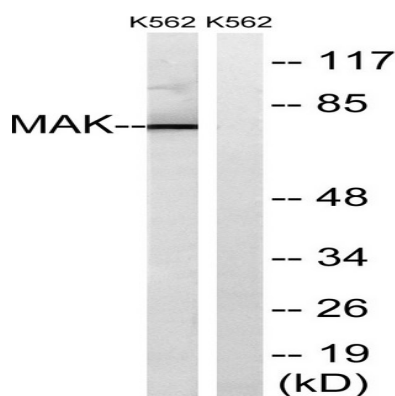
Product Name: MAK Rabbit Polyclonal Antibody
Catalog #: AP Rab13602



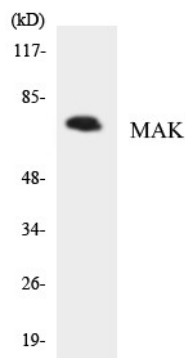
The product of this gene is a serine/threonine protein kinase related to kinases involved in cell cycle regulation. Studies of the mouse and rat homologs have localized the kinase to the chromosomes during meiosis in spermatogenesis, specifically to the synaptonemal complex that exists while homologous chromosomes are paired. Mutations in this gene have been associated with ciliary defects resulting in retinitis pigmentosa 62. Alternative splicing results in multiple transcript variants. [provided by RefSeq, Jan 2016], catalytic activity: ATP + a protein = ADP + a phosphoprotein., function: Could play an important function in spermatogenesis., similarity: Belongs to the protein kinase superfamily., similarity: Belongs to the protein kinase superfamily. CMGC Ser/Thr protein kinase family. CDC2/CDKX subfamily., similarity: Contains 1 protein kinase domain., tissue specificity: Expressed mainly in testicular cells at and after meiosis.,

Research Area

Image Data



Western blot analysis of lysates from K562 cells, using MAK Antibody. The lane on the right is blocked with the synthesized peptide.



Western blot analysis of the lysates from HepG2 cells using MAK antibody.

Note

For research use only.

Product Name: MAK Rabbit Polyclonal Antibody
Catalog #: APRab13602

