

Product Name: Maf1 Rabbit Polyclonal Antibody
Catalog #: APRab13559



Summary

Production Name	Maf1 Rabbit Polyclonal Antibody
Description	Rabbit Polyclonal Antibody
Host	Rabbit
Application	IHC,ELISA
Reactivity	Human,Mouse,Rat

Performance

Conjugation	Unconjugated
Modification	Unmodified
Isotype	IgG
Clonality	Polyclonal
Form	Liquid
Storage	Store at 4°C short term. Aliquot and store at -20°C long term. Avoid freeze/thaw cycles.
Buffer	Liquid in PBS containing 50% glycerol, 0.5% BSA and 0.02% New type preservative N.
Purification	Affinity purification

Immunogen

Gene Name	MAF1
Alternative Names	MAF1; Repressor of RNA polymerase III transcription MAF1 homolog
Gene ID	84232.0
SwissProt ID	Q9H063.Synthesized peptide derived from Maf1 . at AA range: 110-190

Application

Dilution Ratio	IHC 1:100-1:300 ELISA: 1:20000
Molecular Weight	

Background

This gene encodes a protein that is similar to Maf1, a *Saccharomyces cerevisiae* protein highly conserved in eukaryotic cells. Yeast Maf1 is a negative effector of RNA polymerase III (Pol III). It responds to changes in the cellular environment and

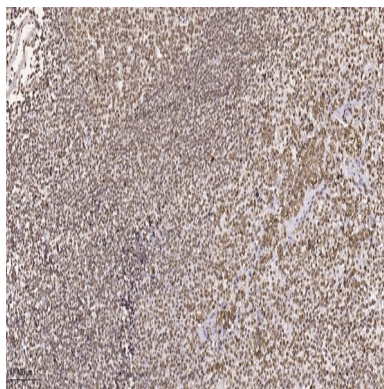
Product Name: Maf1 Rabbit Polyclonal Antibody
Catalog #: APRab13559



represses pol III transcription. Biochemical studies identified the initiation factor TFIIIB as a target for Maf1-dependent repression. [provided by RefSeq, Jul 2008],function:Mediator of diverse signals that repress RNA polymerase III transcription. Inhibits the de novo assembly of TFIIIB onto DNA.,similarity:Belongs to the MAF1 family.,subunit:Interacts with BRF2.,

Research Area

Image Data



Immunohistochemical analysis of paraffin-embedded human tonsil. 1, Tris-EDTA,pH9.0 was used for antigen retrieval. 2 Antibody was diluted at 1:200 (4° overnight.3,Secondary antibody was diluted at 1:200 (room temperature, 45min) .

Note

For research use only.