
Summary

Production Name	mAChR M1 Rabbit Polyclonal Antibody
Description	Rabbit Polyclonal Antibody
Host	Rabbit
Application	WB,ELISA
Reactivity	Human,Mouse,Rat

Performance

Conjugation	Unconjugated
Modification	Unmodified
Isotype	IgG
Clonality	Polyclonal
Form	Liquid
Storage	Store at 4°C short term. Aliquot and store at -20°C long term. Avoid freeze/thaw cycles.
Buffer	Liquid in PBS containing 50% glycerol, 0.5% BSA and 0.02% New type preservative N.
Purification	Affinity purification

Immunogen

Gene Name	CHRM1
Alternative Names	CHRM1; Muscarinic acetylcholine receptor M1
Gene ID	1128.0
SwissProt ID	P11229.The antiserum was produced against synthesized peptide derived from human CHRM1. AA range:295-344

Application

Dilution Ratio	WB 1:500 - 1:2000. ELISA: 1:5000.
Molecular Weight	51kD

Background

Product Name: mAChR M1 Rabbit Polyclonal Antibody
Catalog #: APRab13543

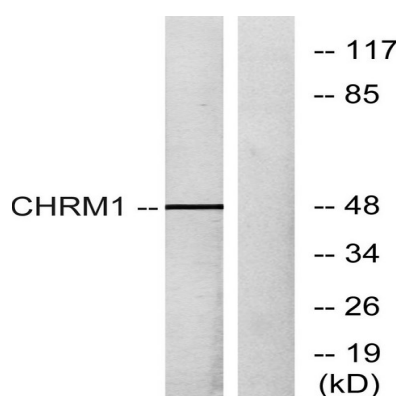


The muscarinic cholinergic receptors belong to a larger family of G protein-coupled receptors. The functional diversity of these receptors is defined by the binding of acetylcholine and includes cellular responses such as adenylate cyclase inhibition, phosphoinositide degeneration, and potassium channel mediation. Muscarinic receptors influence many effects of acetylcholine in the central and peripheral nervous system. The muscarinic cholinergic receptor 1 is involved in mediation of vagally-induced bronchoconstriction and in the acid secretion of the gastrointestinal tract. The gene encoding this receptor is localized to 11q13. [provided by RefSeq, Jul 2008],function:The muscarinic acetylcholine receptor mediates various cellular responses, including inhibition of adenylate cyclase, breakdown of phosphoinositides and modulation of potassium channels through the action of G proteins. Primary transducing effect is Pi turnover.,similarity:Belongs to the G-protein coupled receptor 1 family.,subunit:Interacts with GPRASP2.,

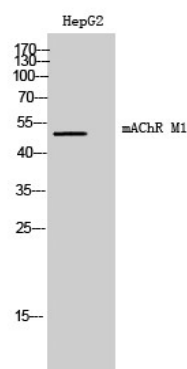
Research Area

Calcium;Neuroactive ligand-receptor interaction;Regulates Actin and Cytoskeleton;

Image Data



Western blot analysis of lysates from HepG2 cells, using CHR M1 Antibody. The lane on the right is blocked with the synthesized peptide.



Western Blot analysis of HepG2 cells using mAChR M1 Polyclonal Antibody

Product Name: mAChR M1 Rabbit Polyclonal Antibody
Catalog #: APRab13543



Note

For research use only.