

Summary

| | |
|------------------------|-----------------------------------|
| Production Name | LYPLA1 Rabbit Polyclonal Antibody |
| Description | Rabbit Polyclonal Antibody |
| Host | Rabbit |
| Application | WB,IHC |
| Reactivity | Human,Mouse,Rat |

Performance

| | |
|---------------------|--|
| Conjugation | Unconjugated |
| Modification | Unmodified |
| Isotype | IgG |
| Clonality | Polyclonal |
| Form | Liquid |
| Storage | Store at 4°C short term. Aliquot and store at -20°C long term. Avoid freeze/thaw cycles. |
| Buffer | Liquid in PBS containing 50% glycerol, 0.5% BSA and 0.02% New type preservative N. |
| Purification | Affinity purification |

Immunogen

| | |
|--------------------------|---|
| Gene Name | LYPLA1 |
| Alternative Names | LYPLA1; APT1; LPL1; Acyl-protein thioesterase 1; APT-1; hAPT1; Lysophospholipase 1; Lysophospholipase I; LPL-I; LysoPLA I |
| Gene ID | 10434.0 |
| SwissProt ID | O75608.The antiserum was produced against synthesized peptide derived from human LYPLA1. AA range:51-100 |

Application

| | |
|-------------------------|---|
| Dilution Ratio | WB 1:500 - 1:2000. IHC 1:100 - 1:300. ELISA: 1:40000. Not yet tested in other applications. |
| Molecular Weight | 25kD |

Product Name: LYPLA1 Rabbit Polyclonal Antibody
Catalog #: AP Rab13515



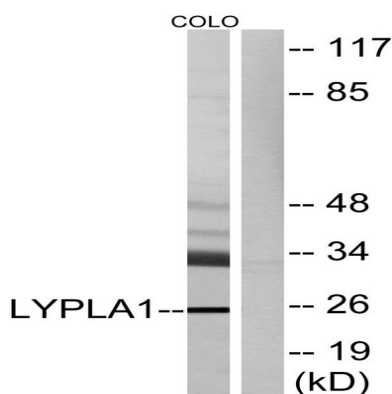
Background

This gene encodes a member of the alpha/beta hydrolase superfamily. The encoded protein functions as a homodimer, exhibiting both depalmitoylating as well as lysophospholipase activity, and may be involved in Ras localization and signaling. Alternate splicing results in multiple transcript variants. Pseudogenes of this gene have been defined on chromosomes 4, 6, and 7. [provided by RefSeq, Jul 2013], catalytic activity: Palmitoyl-protein + H₂O = palmitate + protein., function: Hydrolyzes fatty acids from S-acylated cysteine residues in proteins such as trimeric G alpha proteins or HRAS. Also has low lysophospholipase activity., similarity: Belongs to the AB hydrolase 2 family., subunit: Homodimer.,

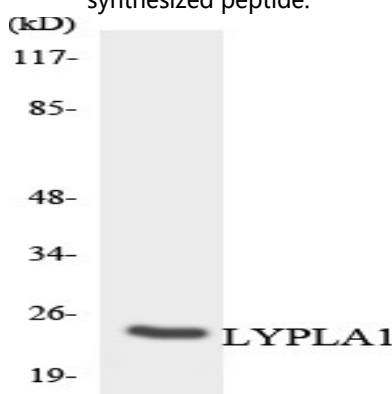
Research Area

Glycerophospholipid metabolism;

Image Data

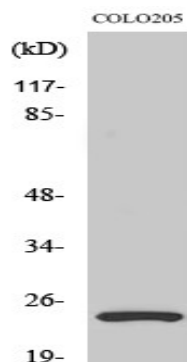


Western blot analysis of lysates from COLO cells, using LYPLA1 Antibody. The lane on the right is blocked with the synthesized peptide.

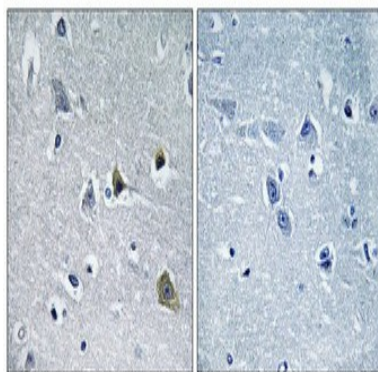


Western blot analysis of the lysates from HeLa cells using LYPLA1 antibody.

Product Name: LYPLA1 Rabbit Polyclonal Antibody
Catalog #: APRab13515



Western Blot analysis of various cells using LYPLA1 Polyclonal Antibody diluted at 1: 2000



Immunohistochemical analysis of paraffin-embedded Human brain. Antibody was diluted at 1:100 (4°,overnight) . High-pressure and temperature Tris-EDTA,pH8.0 was used for antigen retrieval. Negative contrl (right) obtained from antibody was pre-absorbed by immunogen peptide.

Note

For research use only.