

Product Name: LTK Rabbit Polyclonal Antibody
Catalog #: APRab13476



Summary

Production Name	LTK Rabbit Polyclonal Antibody
Description	Rabbit Polyclonal Antibody
Host	Rabbit
Application	WB,ELISA
Reactivity	Human,Mouse

Performance

Conjugation	Unconjugated
Modification	Unmodified
Isotype	IgG
Clonality	Polyclonal
Form	Liquid
Storage	Store at 4°C short term. Aliquot and store at -20°C long term. Avoid freeze/thaw cycles.
Buffer	Liquid in PBS containing 50% glycerol, 0.5% BSA and 0.02% New type preservative N.
Purification	Affinity purification

Immunogen

Gene Name	LTK
Alternative Names	LTK; TYK1; Leukocyte tyrosine kinase receptor; Protein tyrosine kinase 1
Gene ID	4058.0
SwissProt ID	P29376.The antiserum was produced against synthesized peptide derived from human LTK. AA range:206-255

Application

Dilution Ratio	WB 1:500 - 1:2000. ELISA: 1:5000
Molecular Weight	92kD

Background

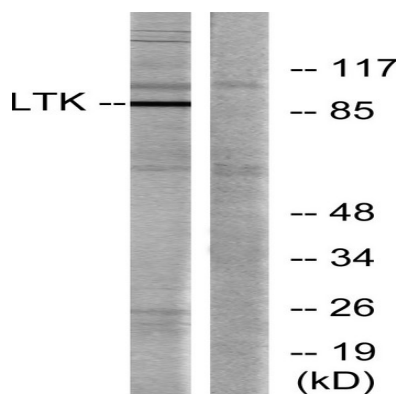
Product Name: LTK Rabbit Polyclonal Antibody
Catalog #: AP Rab13476



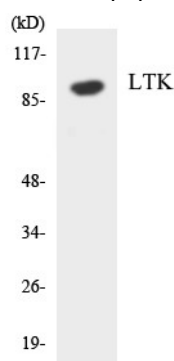
leukocyte receptor tyrosine kinase(LTK) Homo sapiens The protein encoded by this gene is a member of the ros/insulin receptor family of tyrosine kinases. Tyrosine-specific phosphorylation of proteins is a key to the control of diverse pathways leading to cell growth and differentiation. Multiple transcript variants encoding different isoforms have been found for this gene. [provided by RefSeq, Oct 2008],alternative products:Additional isoforms seem to exist,catalytic activity:ATP + a [protein]-L-tyrosine = ADP + a [protein]-L-tyrosine phosphate.,function:The exact function of this protein is not known. It is probably a receptor with a tyrosine-protein kinase activity.,similarity:Belongs to the protein kinase superfamily. Tyr protein kinase family. Insulin receptor subfamily.,similarity:Contains 1 protein kinase domain.,tissue specificity:Expressed in non-hematopoietic cell lines and T- and B-cell lines.,

Research Area

Image Data



Western blot analysis of lysates from Jurkat cells, using LTK Antibody. The lane on the right is blocked with the synthesized peptide.



Western blot analysis of the lysates from HeLa cells using LTK antibody.

Note

For research use only.

Product Name: LTK Rabbit Polyclonal Antibody
Catalog #: APRab13476

