

Product Name: LRRC41 Rabbit Polyclonal Antibody
Catalog #: AP Rab13441



Summary

Production Name	LRRC41 Rabbit Polyclonal Antibody
Description	Rabbit Polyclonal Antibody
Host	Rabbit
Application	WB,ELISA
Reactivity	Human,Mouse,Rat

Performance

Conjugation	Unconjugated
Modification	Unmodified
Isotype	IgG
Clonality	Polyclonal
Form	Liquid
Storage	Store at 4°C short term. Aliquot and store at -20°C long term. Avoid freeze/thaw cycles.
Buffer	Liquid in PBS containing 50% glycerol, 0.5% BSA and 0.02% New type preservative N.
Purification	Affinity purification

Immunogen

Gene Name	LRRC41
Alternative Names	LRRC41; MUF1; PP7759; Leucine-rich repeat-containing protein 41; Protein Muf1
Gene ID	10489.0
SwissProt ID	Q15345.The antiserum was produced against synthesized peptide derived from human LRRC41. AA range:391-440

Application

Dilution Ratio	WB 1:500 - 1:2000. ELISA: 1:5000..
Molecular Weight	80kD

Background

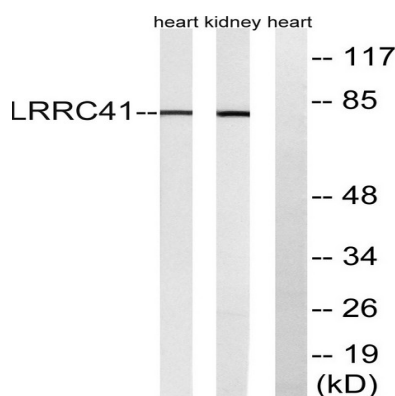
Product Name: LRRC41 Rabbit Polyclonal Antibody
Catalog #: AP Rab13441



caution:It is uncertain whether Met-1 or Met-23 is the initiator.,domain:The elongin BC complex binding domain is also known as BC-box with the consensus [APST]-L-x(3)-C-x(3)-[AILV],,function:Probable substrate recognition component of an ECS (Elongin BC-CUL2/5-SOCS-box protein) E3 ubiquitin ligase complex which mediates the ubiquitination and subsequent proteasomal degradation of target proteins.,pathway:Protein modification; protein ubiquitination.,PTM:Phosphorylated upon DNA damage, probably by ATM or ATR.,sequence caution:Translation N-terminally extended.,similarity:Contains 7 LRR (leucine-rich) repeats.,subunit:Part of an E3 ubiquitin-protein ligase complex with Elongin BC (TCEB1 and TCEB2), RBX1 and CUL5. Component of a probable ECS(LRRC41) complex which contains CUL5, RNF7/RBX2, Elongin BC and LRRC41. Interacts with CUL5, RNF7, TCEB1 and TCEB2.,caution:It is uncertain whether Met-1 or Met-23 is the initiator.,domain:The elongin BC complex binding domain is also known as BC-box with the consensus [APST]-L-x(3)-C-x(3)-[AILV],,function:Probable substrate recognition component of an ECS (Elongin BC-CUL2/5-SOCS-box protein) E3 ubiquitin ligase complex which mediates the ubiquitination and subsequent proteasomal degradation of target proteins.,pathway:Protein modification; protein ubiquitination.,PTM:Phosphorylated upon DNA damage, probably by ATM or ATR.,sequence caution:Translation N-terminally extended.,similarity:Contains 7 LRR (leucine-rich) repeats.,subunit:Part of an E3 ubiquitin-protein ligase complex with Elongin BC (TCEB1 and TCEB2), RBX1 and CUL5. Component of a probable ECS(LRRC41) complex which contains CUL5, RNF7/RBX2, Elongin BC and LRRC41. Interacts with CUL5, RNF7, TCEB1 and TCEB2.,

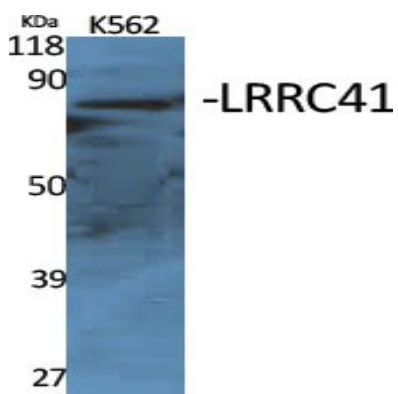
Research Area

Image Data

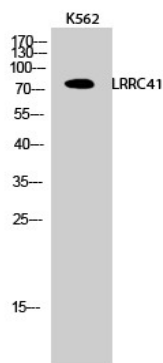


Western blot analysis of lysates from rat kidney and rat heart cells, using LRRC41 Antibody. The lane on the right is blocked with the synthesized peptide.

Product Name: LRRC41 Rabbit Polyclonal Antibody
Catalog #: APRab13441



Western Blot analysis of various cells using LRRC41 Polyclonal Antibody



Western Blot analysis of K562 cells using LRRC41 Polyclonal Antibody

Note

For research use only.