

**Product Name: LPD lipase Rabbit Polyclonal Antibody**  
**Catalog #: APRab13391**



## Summary

|                        |                                       |
|------------------------|---------------------------------------|
| <b>Production Name</b> | LPD lipase Rabbit Polyclonal Antibody |
| <b>Description</b>     | Rabbit Polyclonal Antibody            |
| <b>Host</b>            | Rabbit                                |
| <b>Application</b>     | WB,ELISA                              |
| <b>Reactivity</b>      | Human,Rat,Mouse                       |

## Performance

|                     |  |
|---------------------|--|
| <b>Conjugation</b>  | Unconjugated   |
| <b>Modification</b> | Unmodified   |
| <b>Isotype</b>      | IgG  |
| <b>Clonality</b>    | Polyclonal   |
| <b>Form</b>         | Liquid   |
| <b>Storage</b>      | Store at 4°C short term. Aliquot and store at -20°C long term. Avoid freeze/thaw cycles. |
| <b>Buffer</b>       | Liquid in PBS containing 50% glycerol, 0.5% BSA and 0.02% New type preservative N.       |
| <b>Purification</b> | Affinity purification  |

## Immunogen

|                          |  |
|--------------------------|--|
| <b>Gene Name</b>         | LIPI<br>LIPI; LPDL; PRED5; Lipase member I; LIPI; Cancer/testis antigen 17; CT17; LPD lipase;              |
| <b>Alternative Names</b> | Membrane-associated phosphatidic acid-selective phospholipase A1-beta; mPA-PLA1<br>beta                    |
| <b>Gene ID</b>           | 149998.0   |
| <b>SwissProt ID</b>      | Q6XZB0.The antiserum was produced against synthesized peptide derived from human<br>LIPI. AA range:289-338 |

## Application

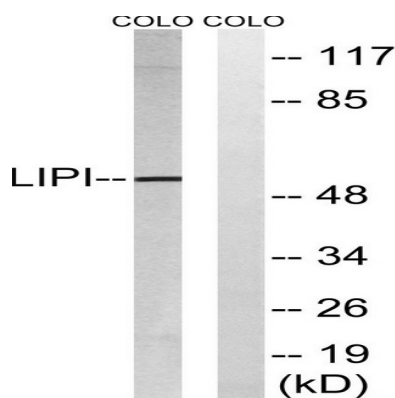
|                         |                                     |
|-------------------------|-------------------------------------|
| <b>Dilution Ratio</b>   | WB 1:500 - 1:2000. ELISA: 1:10000.. |
| <b>Molecular Weight</b> | 53kD                                |

## Background

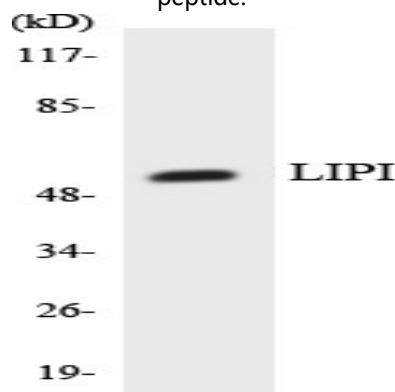
The protein encoded by this gene is a phospholipase that hydrolyzes phosphatidic acid to produce lysophosphatidic acid. Defects in this gene are a cause of susceptibility to familial hypertriglyceridemia. This gene is also expressed at high levels in Ewing family tumor cells. Alternative splicing results in multiple transcript variants. [provided by RefSeq, Dec 2014], disease: Defects in LIPI may be a cause of susceptibility to familial hypertriglyceridemia [MIM:145750]. Familial hypertriglyceridemia is a common inherited disorder in which the concentration of very low density lipoprotein (VLDL) is elevated in the plasma. This leads to increased risk of heart disease, obesity, and pancreatitis., enzyme regulation: Inhibited by sodium vanadate., function: Hydrolyzes specifically phosphatidic acid (PA) to produce lysophosphatidic acid (LPA)., PTM: Phosphorylated upon DNA damage, probably by ATM or ATR., similarity: Belongs to the AB hydrolase superfamily. Lipase family., subcellular location: May associate with lipid draft., subunit: Interacts with heparin with a high affinity., tissue specificity: Expressed in testis. Expressed exclusively at the connecting piece of the sperm.,

## Research Area

## Image Data



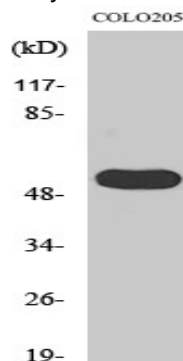
Western blot analysis of lysates from COLO cells, using LIPI Antibody. The lane on the right is blocked with the synthesized peptide.



**Product Name: LPD lipase Rabbit Polyclonal Antibody**  
**Catalog #: APRab13391**



Western blot analysis of the lysates from HepG2 cells using LIPI antibody.



Western Blot analysis of various cells using LPD lipase Polyclonal Antibody

### **Note**

For research use only.