

Summary

Production Name	LOST1 Rabbit Polyclonal Antibody
Description	Rabbit Polyclonal Antibody
Host	Rabbit
Application	WB,IF,ELISA
Reactivity	Human,Rat,Mouse

Performance

Conjugation	Unconjugated
Modification	Unmodified
Isotype	IgG
Clonality	Polyclonal
Form	Liquid
Storage	Store at 4°C short term. Aliquot and store at -20°C long term. Avoid freeze/thaw cycles.
Buffer	Liquid in PBS containing 50% glycerol, 0.5% BSA and 0.02% New type preservative N.
Purification	Affinity purification

Immunogen

Gene Name	TUSC5 TUSC5; IFITMD3; LOST1; Tumor suppressor candidate 5; Dispanin subfamily B member
Alternative Names	1; DSPB1; Interferon-induced transmembrane domain-containing protein D3; Protein located at seventeen-p-thirteen point three 1
Gene ID	286753.0
SwissProt ID	Q8IXB3.The antiserum was produced against synthesized peptide derived from human TUSC5. AA range:1-50

Application

Dilution Ratio	WB 1:500 - 1:2000. IF 1:200 - 1:1000. ELISA: 1:20000. Not yet tested in other applications.
-----------------------	---

Product Name: LOST1 Rabbit Polyclonal Antibody
Catalog #: APRab13373



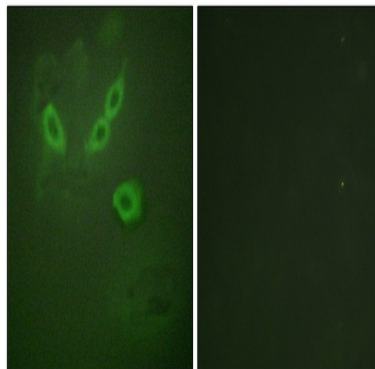
Molecular Weight 22kD

Background

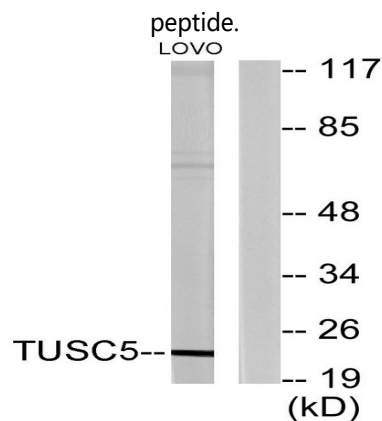
developmental stage:Expressed in fetal brain.,function:May be involved in fat metabolism.,similarity:Belongs to the CD225 family.,tissue specificity:Expressed at high levels in heart, mammary gland, adrenal gland, stomach, smooth muscle and skeletal muscle, and at lower levels in brain and lung. Strongly down-regulated in lung cancer tissues, due to hypermethylation of the corresponding locus.,developmental stage:Expressed in fetal brain.,function:May be involved in fat metabolism.,similarity:Belongs to the CD225 family.,tissue specificity:Expressed at high levels in heart, mammary gland, adrenal gland, stomach, smooth muscle and skeletal muscle, and at lower levels in brain and lung. Strongly down-regulated in lung cancer tissues, due to hypermethylation of the corresponding locus.,

Research Area

Image Data



Immunofluorescence analysis of HeLa cells, using TUSC5 Antibody. The picture on the right is blocked with the synthesized



Western blot analysis of lysates from LOVO cells, using TUSC5 Antibody. The lane on the right is blocked with the synthesized peptide.

Product Name: LOST1 Rabbit Polyclonal Antibody
Catalog #: APRab13373



Note

For research use only.