

Summary

Production Name	LONP2 Rabbit Polyclonal Antibody
Description	Rabbit Polyclonal Antibody
Host	Rabbit
Application	IHC,ELISA
Reactivity	Human,Mouse,Rat

Performance

Conjugation	Unconjugated
Modification	Unmodified
Isotype	IgG
Clonality	Polyclonal
Form	Liquid
Storage	Store at 4°C short term. Aliquot and store at -20°C long term. Avoid freeze/thaw cycles.
Buffer	Liquid in PBS containing 50% glycerol, 0.5% BSA and 0.02% New type preservative N.
Purification	Affinity purification

Immunogen

Gene Name	LONP2
Alternative Names	LONP2; LONP; Lon protease homolog 2; peroxisomal; Lon protease-like protein 2; Lon protease 2; Peroxisomal Lon protease
Gene ID	83752.0
SwissProt ID	Q86WA8.The antiserum was produced against synthesized peptide derived from human LONP2. AA range:780-829

Application

Dilution Ratio	IHC 1:100-1:300 ELISA: 1:40000
Molecular Weight	95kD

Background

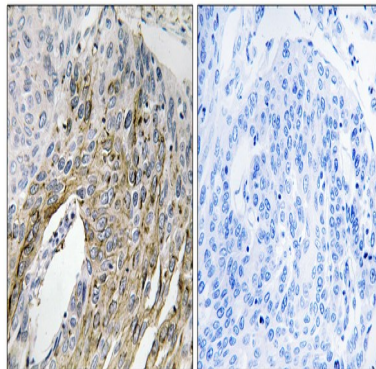
Product Name: LONP2 Rabbit Polyclonal Antibody
Catalog #: APRab13371



function:Probable serine protease which may be involved in peroxisome biogenesis.,similarity:Belongs to the peptidase S16 family.,function:Probable serine protease which may be involved in peroxisome biogenesis.,similarity:Belongs to the peptidase S16 family.,

Research Area

Image Data



Immunohistochemistry analysis of paraffin-embedded human lung carcinoma tissue, using LONP2 Antibody. The picture on the right is blocked with the synthesized peptide.

Note

For research use only.