

Product Name: LOK Rabbit Polyclonal Antibody
Catalog #: APRab13368

Summary

Production Name	LOK Rabbit Polyclonal Antibody
Description	Rabbit Polyclonal Antibody
Host	Rabbit
Application	WB,ELISA
Reactivity	Human,Rat,Mouse

Performance

Conjugation	Unconjugated
Modification	Unmodified
Isotype	IgG
Clonality	Polyclonal
Form	Liquid
Storage	Store at 4°C short term. Aliquot and store at -20°C long term. Avoid freeze/thaw cycles.
Buffer	Liquid in PBS containing 50% glycerol, 0.5% BSA and 0.02% New type preservative N.
Purification	Affinity purification

Immunogen

Gene Name	STK10
Alternative Names	STK10; LOK; Serine/threonine-protein kinase 10; Lymphocyte-oriented kinase
Gene ID	6793.0
SwissProt ID	O94804.The antiserum was produced against synthesized peptide derived from human STK10. AA range:491-540

Application

Dilution Ratio	WB 1:500-2000 ELISA 2000-20000
Molecular Weight	120kD

Background

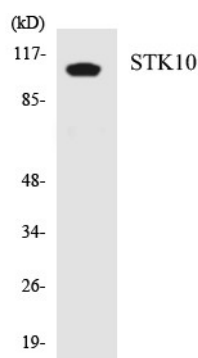
Product Name: LOK Rabbit Polyclonal Antibody
Catalog #: APRab13368



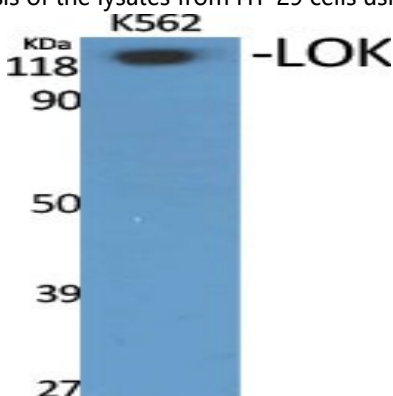
This gene encodes a member of the Ste20 family of serine/threonine protein kinases, and is similar to several known polo-like kinase kinases. The protein can associate with and phosphorylate polo-like kinase 1, and overexpression of a kinase-dead version of the protein interferes with normal cell cycle progression. The kinase can also negatively regulate interleukin 2 expression in T-cells via the mitogen activated protein kinase kinase 1 pathway. [provided by RefSeq, Jul 2008], catalytic activity: ATP + a protein = ADP + a phosphoprotein., function: Can act on substrates such as myelin basic protein and histone 2A on serine and threonine residues., PTM: Autophosphorylated., similarity: Belongs to the protein kinase superfamily., similarity: Belongs to the protein kinase superfamily. STE Ser/Thr protein kinase family. STE20 subfamily., similarity: Contains 1 protein kinase domain., tissue specificity: Expressed predominantly in lymphoid organs.,

Research Area

Image Data

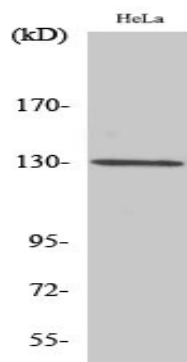


Western blot analysis of the lysates from HT-29 cells using STK10 antibody.



Western Blot analysis of various cells using LOK Polyclonal Antibody

Product Name: LOK Rabbit Polyclonal Antibody
Catalog #: APRab13368



Western Blot analysis of HuvEc cells using LOK Polyclonal Antibody

Note

For research use only.