

Product Name: LMO4 Rabbit Polyclonal Antibody
Catalog #: APRab13359



Summary

Production Name	LMO4 Rabbit Polyclonal Antibody
Description	Rabbit Polyclonal Antibody
Host	Rabbit
Application	WB,ELISA
Reactivity	Human,Mouse,Rat

Performance

Conjugation	Unconjugated
Modification	Unmodified
Isotype	IgG
Clonality	Polyclonal
Form	Liquid
Storage	Store at 4°C short term. Aliquot and store at -20°C long term. Avoid freeze/thaw cycles.
Buffer	Liquid in PBS containing 50% glycerol, 0.5% BSA and 0.02% New type preservative N.
Purification	Affinity purification

Immunogen

Gene Name	LMO4
Alternative Names	LMO4; LIM domain transcription factor LMO4; Breast tumor autoantigen; LIM domain only protein 4; LMO-4
Gene ID	8543.0
SwissProt ID	P61968.The antiserum was produced against synthesized peptide derived from human LMO4. AA range:116-165

Application

Dilution Ratio	WB 1:500 - 1:2000. ELISA: 1:20000. Not yet tested in other applications.
Molecular Weight	44kD

Product Name: LMO4 Rabbit Polyclonal Antibody
Catalog #: APRab13359

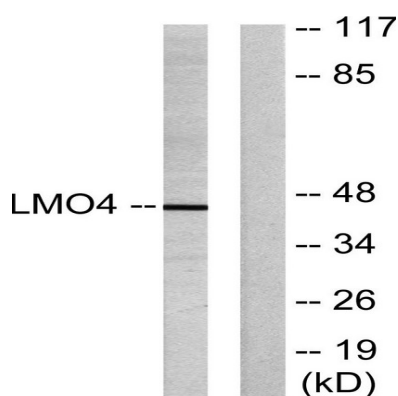


Background

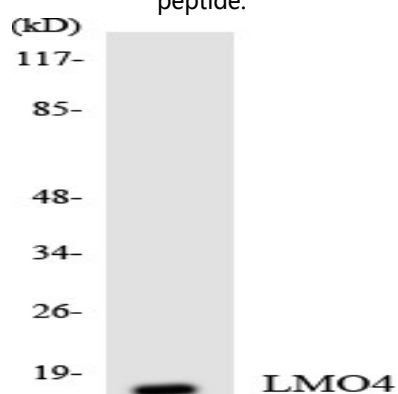
LIM domain only 4(LMO4) Homo sapiens This gene encodes a cysteine-rich protein that contains two LIM domains but lacks a DNA-binding homeodomain. The encoded protein may play a role as a transcriptional regulator or as an oncogene. [provided by RefSeq, Aug 2008],function:Probable transcriptional factor.,similarity:Contains 2 LIM zinc-binding domains.,subunit:Interacts strongly with LDBS. Interacts with DEAF1, CLIM1 and CLIM2.,

Research Area

Image Data

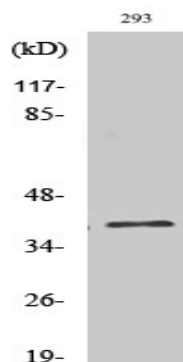


Western blot analysis of lysates from 293 cells, using LMO4 Antibody. The lane on the right is blocked with the synthesized peptide.



Western blot analysis of the lysates from HepG2 cells using LMO4 antibody.

Product Name: LMO4 Rabbit Polyclonal Antibody
Catalog #: APRab13359



Western Blot analysis of various cells using LMO4 Polyclonal Antibody cells nucleus extracted by Minute TM Cytoplasmic and Nuclear Fractionation kit (SC-003, Inventbiotech, MN, USA) .

Note

For research use only.