

Product Name: LDOC1 Rabbit Polyclonal Antibody
Catalog #: APRab13272



Summary

Production Name	LDOC1 Rabbit Polyclonal Antibody
Description	Rabbit Polyclonal Antibody
Host	Rabbit
Application	IHC,ELISA
Reactivity	Human,Mouse

Performance

Conjugation	Unconjugated
Modification	Unmodified
Isotype	IgG
Clonality	Polyclonal
Form	Liquid
Storage	Store at 4°C short term. Aliquot and store at -20°C long term. Avoid freeze/thaw cycles.
Buffer	Liquid in PBS containing 50% glycerol, 0.5% BSA and 0.02% New type preservative N.
Purification	Affinity purification

Immunogen

Gene Name	LDOC1
Alternative Names	LDOC1; BCUR1; Protein LDOC1; Leucine zipper protein down-regulated in cancer cells
Gene ID	23641.0
SwissProt ID	O95751.The antiserum was produced against synthesized peptide derived from human LDOC1. AA range:21-70

Application

Dilution Ratio	IHC 1:100-1:300 ELISA: 1:5000
Molecular Weight	

Background

The protein encoded by this gene contains a leucine zipper-like motif and a proline-rich region that shares marked

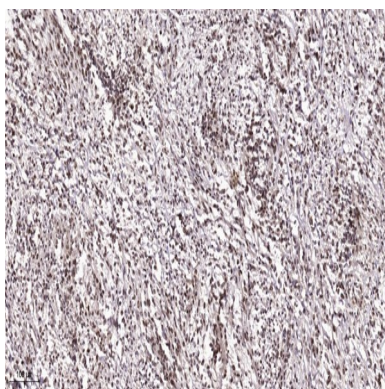
Product Name: LDOC1 Rabbit Polyclonal Antibody
Catalog #: AP Rab13272



similarity with an SH3-binding domain. The protein localizes to the nucleus and is down-regulated in some cancer cell lines. It is thought to regulate the transcriptional response mediated by the nuclear factor kappa B (NF-kappaB). The gene has been proposed as a tumor suppressor gene whose protein product may have an important role in the development and/or progression of some cancers. [provided by RefSeq, Jul 2008],function:May have an important role in the development and/or progression of some cancers.,similarity:Belongs to the LDOC1 family.,tissue specificity:Ubiquitously expressed with high levels in brain ant thyroid and low expression in placenta, liver and leukocytes. Expressed as well in six of the seven human breast cancer cell lines examined.,

Research Area

Image Data



Immunohistochemical analysis of paraffin-embedded human Colon cancer. 1, Antibody was diluted at 1:200 (4° overnight) .
2, Tris-EDTA,pH9.0 was used for antigen retrieval. 3,Secondary antibody was diluted at 1:200 (room temperature, 45min) .

Note

For research use only.