

Product Name: LDLRAD3 Rabbit Polyclonal Antibody
Catalog #: APRab13271



Summary

Production Name	LDLRAD3 Rabbit Polyclonal Antibody
Description	Rabbit Polyclonal Antibody
Host	Rabbit
Application	IF,ELISA
Reactivity	Human,Mouse

Performance

Conjugation	Unconjugated
Modification	Unmodified
Isotype	IgG
Clonality	Polyclonal
Form	Liquid
Storage	Store at 4°C short term. Aliquot and store at -20°C long term. Avoid freeze/thaw cycles.
Buffer	Liquid in PBS containing 50% glycerol, 0.5% BSA and 0.02% New type preservative N.
Purification	Affinity purification

Immunogen

Gene Name	LDLRAD3
Alternative Names	LDLRAD3; Low-density lipoprotein receptor class A domain-containing protein 3
Gene ID	143458.0
SwissProt ID	Q86YD5.The antiserum was produced against synthesized peptide derived from human LDLRAD3. AA range:37-86

Application

Dilution Ratio	IF 1:200-1:1000
Molecular Weight	37kD

Background

similarity:Belongs to the LDLR family.,similarity:Contains 3 LDL-receptor class A domains.,similarity:Belongs to the LDLR

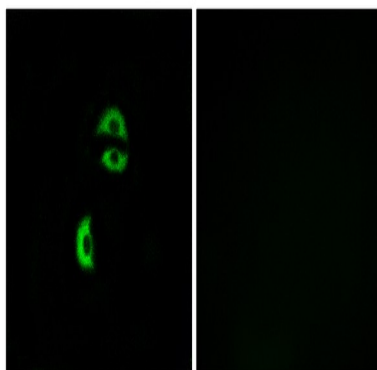
Product Name: LDLRAD3 Rabbit Polyclonal Antibody
Catalog #: APRab13271



family, similarity: Contains 3 LDL-receptor class A domains.,

Research Area

Image Data



Immunofluorescence analysis of A549 cells, using LDLRAD3 Antibody. The picture on the right is blocked with the synthesized peptide.

Note

For research use only.