
Summary

Production Name	Latrophilin-2 Rabbit Polyclonal Antibody
Description	Rabbit Polyclonal Antibody
Host	Rabbit
Application	IHC,IF,ELISA
Reactivity	Human,Mouse,Rat

Performance

Conjugation	Unconjugated
Modification	Unmodified
Isotype	IgG
Clonality	Polyclonal
Form	Liquid
Storage	Store at 4°C short term. Aliquot and store at -20°C long term. Avoid freeze/thaw cycles.
Buffer	Liquid in PBS containing 50% glycerol, 0.5% BSA and 0.02% New type preservative N.
Purification	Affinity purification

Immunogen

Gene Name	LPHN2
Alternative Names	LPHN2; KIAA0786; LEC1; LPHH1; Latrophilin-2; Calcium-independent alpha-latrotoxin receptor 2; CIRL-2; Latrophilin homolog 1; Lectomedin-1
Gene ID	23266.0
SwissProt ID	O95490.The antiserum was produced against synthesized peptide derived from human LPHN2. AA range:551-600

Application

Dilution Ratio	IHC 1:100 - 1:300. IF 1:200 - 1:1000. ELISA: 1:5000. Not yet tested in other applications.
Molecular Weight	

Product Name: Latrophilin-2 Rabbit Polyclonal Antibody
Catalog #: APRab13233

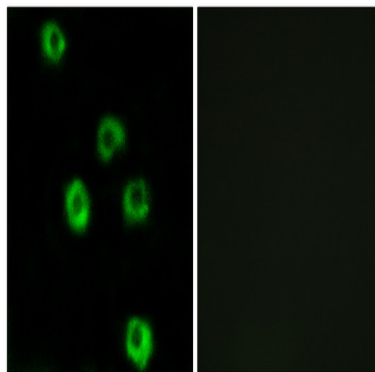


Background

This gene encodes a member of the latrophilin subfamily of G-protein coupled receptors. The encoded protein participates in the regulation of exocytosis. The proprotein is thought to be further cleaved within a cysteine-rich G-protein-coupled receptor proteolysis site into two chains that are non-covalently bound at the cell membrane. Alternative splicing results in multiple transcript variants. [provided by RefSeq, Jul 2014],function:Calcium-independent receptor of low affinity for alpha-latrotoxin, an excitatory neurotoxin present in black widow spider venom which triggers massive exocytosis from neurons and neuroendocrine cells. Receptor probably implicated in the regulation of exocytosis.,PTM:Proteolytically cleaved into 2 subunits, an extracellular subunit and a seven-transmembrane subunit.,similarity:Belongs to the G-protein coupled receptor 2 family. LN-TM7 subfamily.,similarity:Contains 1 GPS domain.,similarity:Contains 1 olfactomedin-like domain.,similarity:Contains 1 SUEL-type lectin domain.,subunit:Forms a heterodimer, consisting of a large extracellular region (p120) non-covalently linked to a seven-transmembrane moiety (p85),,tissue specificity:Expressed very widely in all normal tissues tested. Expression is variable in tumor cell lines, apparently elevated in some lines and absent or markedly reduced in others.,

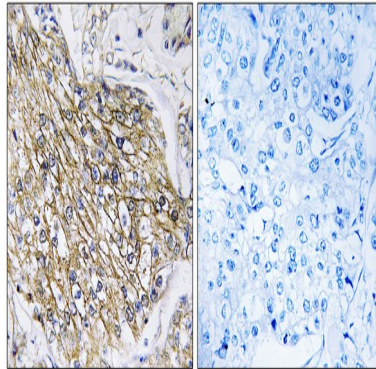
Research Area

Image Data



Immunofluorescence analysis of COS7 cells, using LPHN2 Antibody. The picture on the right is blocked with the synthesized peptide.

Product Name: Latrophilin-2 Rabbit Polyclonal Antibody
Catalog #: APRab13233



Immunohistochemistry analysis of paraffin-embedded human breast carcinoma tissue, using LPHN2 Antibody. The picture on the right is blocked with the synthesized peptide.

Note

For research use only.