

Product Name: Latherin Rabbit Polyclonal Antibody
Catalog #: APRab13231



Summary

Production Name	Latherin Rabbit Polyclonal Antibody
Description	Rabbit Polyclonal Antibody
Host	Rabbit
Application	IF,ELISA
Reactivity	Human,Rat,Mouse

Performance

Conjugation	Unconjugated
Modification	Unmodified
Isotype	IgG
Clonality	Polyclonal
Form	Liquid
Storage	Store at 4°C short term. Aliquot and store at -20°C long term. Avoid freeze/thaw cycles.
Buffer	Liquid in PBS containing 50% glycerol, 0.5% BSA and 0.02% New type preservative N.
Purification	Affinity purification

Immunogen

Gene Name	LATH
Alternative Names	LATH; BASE; Putative latherin; Breast cancer and salivary gland-expressed protein
Gene ID	607627.0
SwissProt ID	Q86YQ2.The antiserum was produced against synthesized peptide derived from human LATH. AA range:71-120

Application

Dilution Ratio	IF 1:200-1:1000. ELISA: 1:20000.
Molecular Weight	19kD

Background

LATH, also named as BASE, belongs to the BPI/LBP/Plunc superfamily and Plunc family. It is the major protein in sweat, has

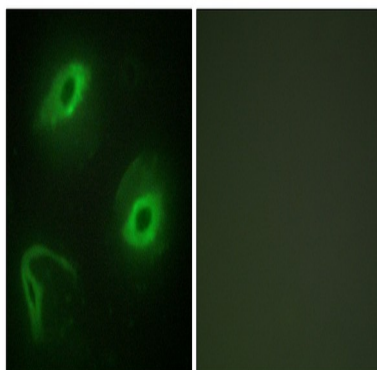
Product Name: Latherin Rabbit Polyclonal Antibody
Catalog #: APRab13231



surfactant properties.

Research Area

Image Data



Immunofluorescence analysis of HeLa cells, using LATH Antibody. The picture on the right is blocked with the synthesized peptide.

Note

For research use only.