

Summary

Production Name	LASS4 Rabbit Polyclonal Antibody
Description	Rabbit Polyclonal Antibody
Host	Rabbit
Application	IHC, WB, ELISA
Reactivity	Human, Rat, Mouse

Performance

Conjugation	Unconjugated
Modification	Unmodified
Isotype	IgG
Clonality	Polyclonal
Form	Liquid
Storage	Store at 4°C short term. Aliquot and store at -20°C long term. Avoid freeze/thaw cycles.
Buffer	Liquid in PBS containing 50% glycerol, 0.5% BSA and 0.02% New type preservative N.
Purification	Affinity purification

Immunogen

Gene Name	CERS4
Alternative Names	CERS4; LASS4; Ceramide synthase 4; CerS4; LAG1 longevity assurance homolog 4
Gene ID	79603.0
SwissProt ID	Q9HA82. The antiserum was produced against synthesized peptide derived from human LASS4. AA range: 41-90

Application

Dilution Ratio	WB 1:500 - 1:2000. IHC 1:100 - 1:300. ELISA: 1:10000..
Molecular Weight	46kD

Background

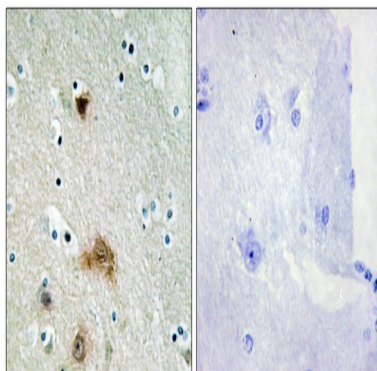
Product Name: LASS4 Rabbit Polyclonal Antibody
Catalog #: APRab13221



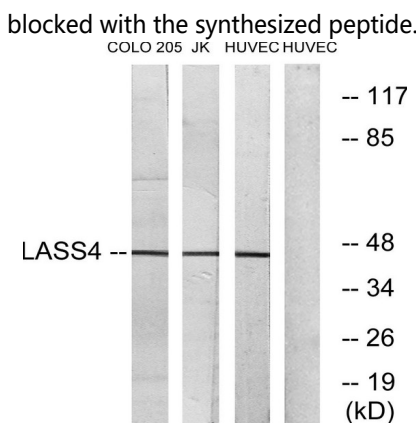
function: May be either a bona fide (dihydro)ceramide synthase or a modulator of its activity. When overexpressed in cells is involved in the production of sphingolipids containing different fatty acid donors (N-linked stearyl- (C18) or arachidoyl- (C20) ceramides) in a fumonisin B1-independent manner., similarity: Contains 1 homeobox DNA-binding domain., similarity: Contains 1 TLC (TRAM/LAG1/CLN8) domain., function: May be either a bona fide (dihydro)ceramide synthase or a modulator of its activity. When overexpressed in cells is involved in the production of sphingolipids containing different fatty acid donors (N-linked stearyl- (C18) or arachidoyl- (C20) ceramides) in a fumonisin B1-independent manner., similarity: Contains 1 homeobox DNA-binding domain., similarity: Contains 1 TLC (TRAM/LAG1/CLN8) domain.,

Research Area

Image Data

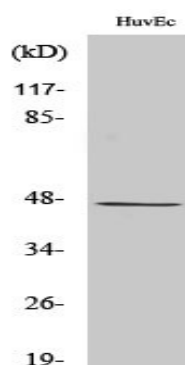


Immunohistochemistry analysis of paraffin-embedded human brain tissue, using LASS4 Antibody. The picture on the right is blocked with the synthesized peptide.



Western blot analysis of lysates from HUVEC, COLO, and Jurkat cells, using LASS4 Antibody. The lane on the right is blocked with the synthesized peptide.

Product Name: LASS4 Rabbit Polyclonal Antibody
Catalog #: APRab13221



Western Blot analysis of various cells using LASS4 Polyclonal Antibody

Note

For research use only.